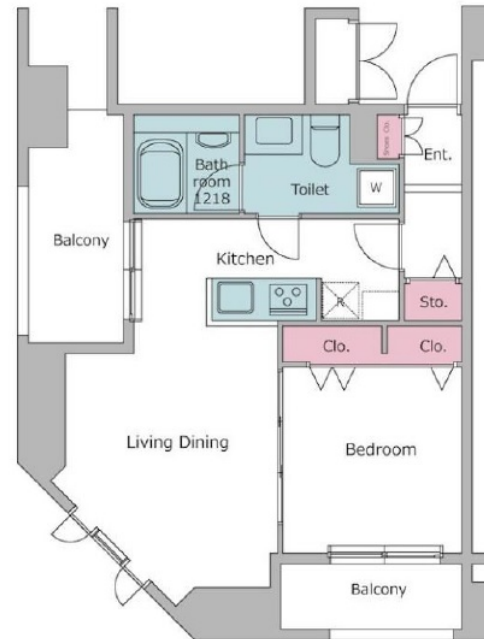


Property Name	PIANETTA SHIODOME	Unit No.	TYPE	Access	Shinbashi Station on JR Yamanote Line (7 min)
		1105	Apt.		
Address	2-4-8, Higashishimbashi (tsuginobiruonozok, Minato-Ku, Tokyo)				



Lease Conditions	
LAYOUT	1 BR
SIZE	43.86 m ² /472.1 ft ²
RENT	JPY 222,000 / month
Management Fee	JPY15,000/month
Deposit	2 months
Key Money	1 month
Lease Term	Standard lease for 24 months
Available	Now
Renewal Fee	1 month
Agent Fee	1 month + tax
Other Info	Key Replacement Fee : JPY18,000 Tax not included / Auto lock / Renovated / Air-Con / Separated Toilet / Balcony / Flooring / Bathroom dryer / Corner Unit

Building Information	
Completion	Earthquake Resistance -
Structure	RC, 12 floors above
Car Parking	TBC
Bicycle Parking	N/A
Music Instrument	Pet -
Facilities	Delivery box

*The actual Layout & Size may differ slightly from this floor plans & pictures.



HOUSEREP TOKYO INC.

ハウズレップトーキョー株式会社

#301, 1-4-15, Hiroo, Shibuya-ku, Tokyo 150-0012, Japan

+81 (0)3 6427 5860

inquiry@housserep-tokyo.com

Transaction Type : Intermediate

Agent Fee : 1 month + tax

Website : www.housserep-tokyo.com



Remarks
Tenancy support service fee: 10,000yen+tax/2 years Internet subscription fee: 1,500yen+tax/month