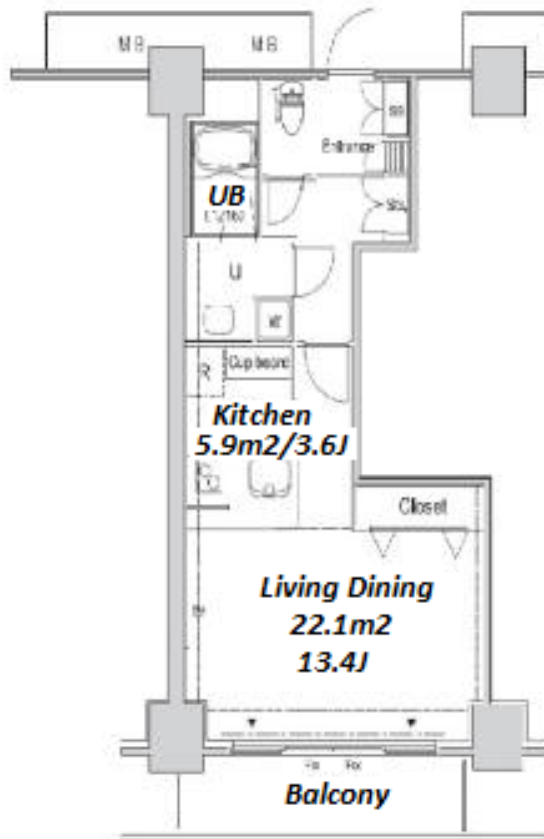
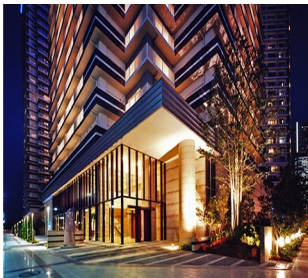
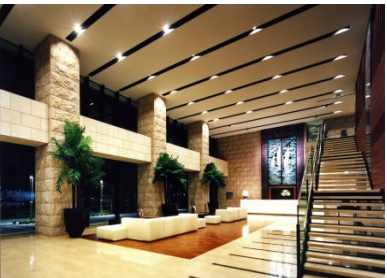


Property Name	PACIFIC ROYAL COURT M.M. - URBAN	Unit No.	TYPE	Access	Shinntakashima Station on Minatomirai Line (7 min) Minatomirai Station on Minatomirai Line (8 min) Yokohama Station on JR Tokaido Line (15 min)
		415	Apt.		
Address	5-3-3, Minatomirai, Nishi-Ku, Yokohama-Shi, Kanagawa				

## Luxury Tower Residence w/Amenities in Minato Mirai, Yokohama



Lease Conditions			
LAYOUT	Studio		
SIZE	45.01 m <sup>2</sup> /484.48 ft <sup>2</sup>		
RENT	JPY 152,000 / month		
Management Fee	JPY15,000/month		
Deposit	2 months	Key Money	2 months
Lease Term	Fixed term lease for 24 months		
Available	End, Oct, 2024		
Renewal Fee	-		
Agent Fee	1 month + tax		
Other Info	Auto lock / Air-Con / Separated Toilet / Balcony / Penalty Fee for Early Cancellation / Flooring		

Building Information			
Completion	Jul, 2008	Earthquake Resistance	New
Structure	RC, 29 floors above and 1 basement floors		
Car Parking	JPY27,000/ month		
Bicycle Parking	for 1 space ( Included )		
Music Instrument	-	Pet	-
Facilities	Motorcycle Parking (JPY5,000 + tax / month) / Gym (( Included )) / Near Large Parks / Front desk / Concierge / Janitor / Delivery box / Elevator / Sky lounge / Security / High-rise		

Remarks
Fixed term lease : Re-Contract Fee : 1.1 month / Renters Insurance : Required

\*The actual Layout & Size may differ slightly from this floor plans & pictures.



### HOUSEREP TOKYO INC.

ハウスレップトキョー株式会社

#301, 1-4-15, Hiroo, Shibuya-ku, Tokyo 150-0012, Japan

+81 (0)3 6427 5860

inquiry@housserep-tokyo.com

Transaction Type : Intermediate

Agent Fee : 1 month + tax

Website : www.housserep-tokyo.com

