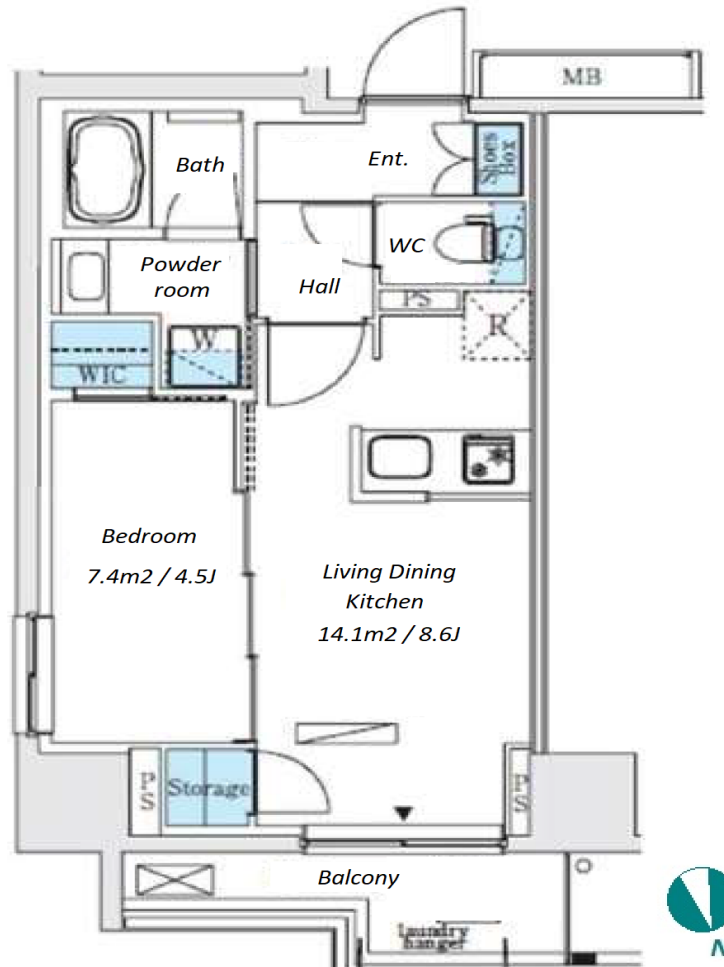
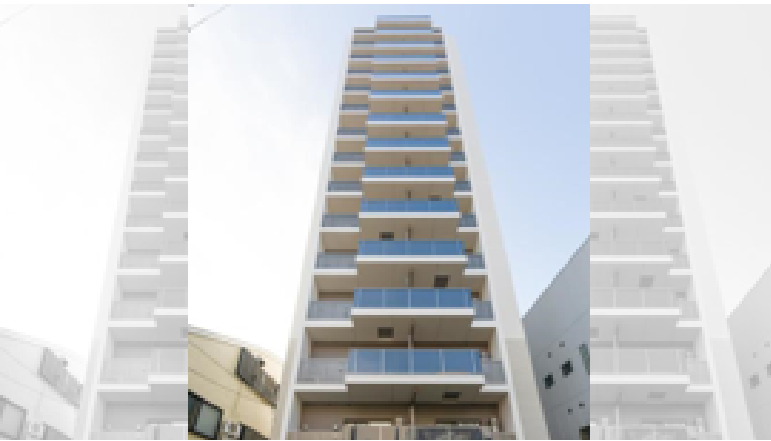


Property Name	COSMOS GRACIA ASAKUSA	Unit No.	TYPE	Access	Asakusa Station on (4 min) Ueno Station on JR Yamanote Line (14 min)
		904	Apt.		
Address	2-21-4, Nishiasakusa, Taito-Ku, Tokyo				

## New Modern Apt. in Lively and Traditional Asakusa District



\*The actual Layout & Size may differ slightly from this floor plans & pictures.

Lease Conditions	
LAYOUT	1 BR
SIZE	35.09 m <sup>2</sup> /377.7 ft <sup>2</sup>
RENT	JPY 158,000 / month
Management Fee	JPY12,000/month
Deposit	1 month
Key Money	-
Lease Term	Standard lease for 24 months
Available	Mid, Oct, 2024
Renewal Fee	1 month
Agent Fee	1 month + tax
Other Info	Key Replacement Fee : JPY20,000 Tax not included / Guarantor Company : TBC / No Key Money / Free rent / Auto lock / Air-Con / Separated Toilet / Balcony / Internet Included / Penalty Fee for Early Cancellation / CS/CATV / Flooring / Bathroom dryer / WIC / Corner Unit

Building Information	
Completion	Nov, 2020
Earthquake Resistance	New
Structure	RC, 15 floors above
Car Parking	JPY30,000 + tax / month
Bicycle Parking	TBC
Music Instrument	-
Pet	-
Facilities	Motorcycle Parking (JPY3,000 + tax / month) / Janitor / Delivery box / Elevator

Remarks
Renters Insurance : Required / Bicycle parking : Registration fee: JPY 2,000+tax



# HOUSEREP TOKYO INC.

ハウスレプトーキョー株式会社

#301, 1-4-15, Hiroo, Shibuya-ku, Tokyo 150-0012, Japan

+81 (0)3 6427 5860

inquiry@housserrep-tokyo.com

Transaction Type : Intermediate

Agent Fee : 1 month + tax

Website : www.housserrep-tokyo.com

