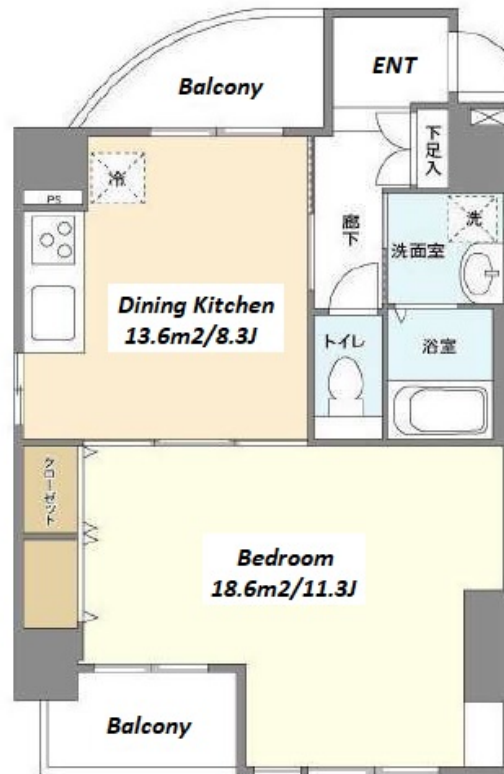


Property Name	CASSIA KINSHICHO SOUTH COURT	Unit No.	TYPE	Access	Kinshichou Station on Hanzomon Line (9 min) Sumiyoshi Station on Hanzomon Line (11 min)
		903	Apt.		
Address	1-1-6, Kotobashi, Sumida-Ku, Tokyo				



## Lease Conditions

LAYOUT	1 BR	
SIZE	47.12 m²/507.19 ft²	
RENT	JPY 159,000 / month	
Management Fee	JPY 10,000/month	
Deposit	-	Key Money -
Lease Term	Standard lease for 24 months	
Available	Early, Nov, 2024	
Renewal Fee	1 month	
Agent Fee	1 month + tax	
Other Info	Key Replacement Fee : JPY30,000 Tax not included / No Key Money / Auto lock / Air-Con / Separated Toilet / Balcony / Internet Included / Penalty Fee for Early Cancellation / Corner Unit	

## Building Information

Completion	Mar, 2005	Earthquake Resistance	New
Structure	RC, 10 floors above		
Car Parking	-		
Bicycle Parking	for 1 space ( Included )		
Music Instrument	-	Pet	-
Facilities	Janitor / Delivery box / Elevator / Security		

## Remarks

Renters Insurance : Required

\*The actual Layout &amp; Size may differ slightly from this floor plans &amp; pictures.



HOUSEREP TOKYO INC.

ハウスレップトーキョー株式会社

#301, 1-4-15, Hiroo, Shibuya-ku, Tokyo 150-0012, Japan

+81 (0)3 6427 5860

inquiry@housserep-tokyo.com

Transaction Type : Intermediate

Agent Fee : 1 month + tax

Website : www.housserep-tokyo.com

