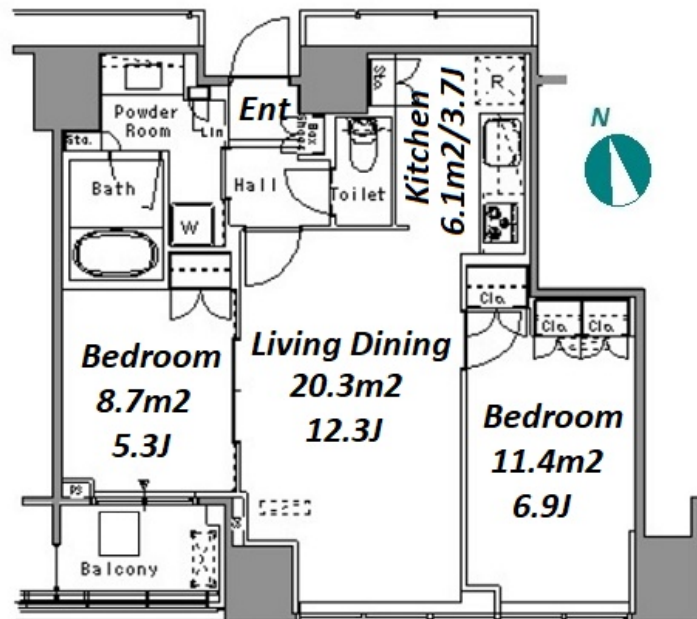
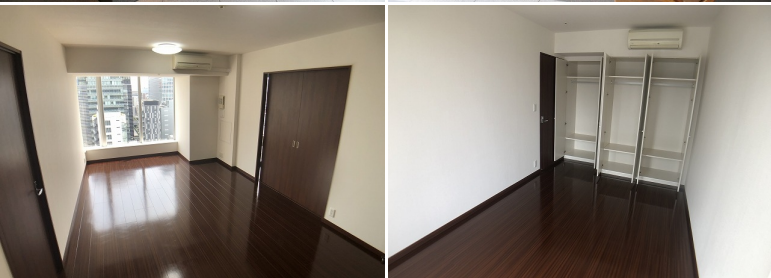


Property Name	WHITE TOWER HAMAMATSUCHO	Unit No.	TYPE	Access	Hamamatsuchou Station on JR Yamanote Line (3 min) Daimonn Station on Oedo Line (3 min)
		1106	Apt.		
Address	1-13-2, Hamamatsucho, Minato-Ku, Tokyo				

Tower Mansion at Hamamatsucho - Easy Access to Shinagawa / Tokyo



Lease Conditions	
LAYOUT	2 BR
SIZE	62.53 m²/673.06 ft²
RENT	JPY 342,000 / month
Management Fee	JPY15,000/month
Deposit	2 months
Key Money	1 month
Lease Term	Standard lease for 24 months
Available	End, Nov, 2024
Renewal Fee	1 month
Agent Fee	1 month + tax
Other Info	Key Replacement Fee : JPY20,000 Tax not included / Auto lock / Air-Con / Balcony / Internet (Extra Charge) / Penalty Fee for Early Cancellation / Musical Instrument Negotiable / CS/CATV / Flooring / Floor Heating / Bathroom dryer

Building Information	
Completion	Feb, 2008
Earthquake Resistance	New
Structure	RC, 24 floors above and 1 basement floors
Car Parking	JPY42,000 + tax / month
Bicycle Parking	N/A
Music Instrument	Negotiable
Pet	-
Facilities	Within 20 min to Roppongi by train / Within 20 min to Tokyo station by car / Near Large Parks / Front desk / Janitor / Delivery box / Elevator / Security / Close to Station / High-rise

Remarks
Renters Insurance : Required / Room Cleaning: JPY 75,036+tax (when moving out)

*The actual Layout & Size may differ slightly from this floor plans & pictures.



HOUSEREP TOKYO INC.

ハウズレップトーキョー株式会社

#301, 1-4-15, Hiroo, Shibuya-ku, Tokyo 150-0012, Japan

+81 (0)3 6427 5860

inquiry@housserrep-tokyo.com

Transaction Type : Intermediate

Agent Fee : 1 month + tax

Website : www.housserrep-tokyo.com

