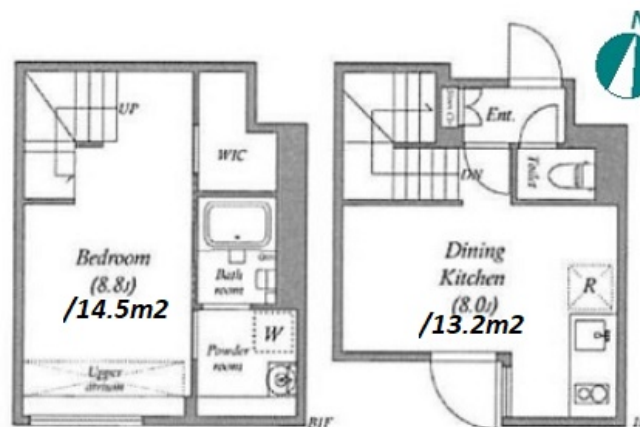
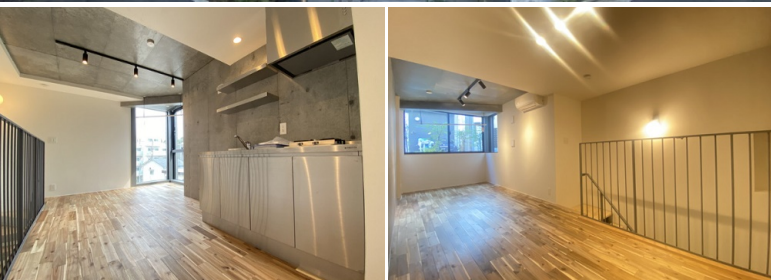
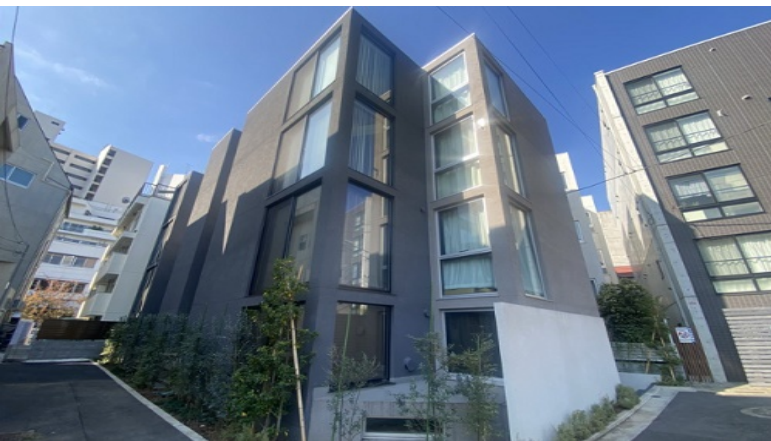


Property Name	LEGALAND NAKAMEGURO ANNEX	Unit No.	TYPE	Access	Nakameguro Station on Hibiya Line (7 min) Ebisu Station on JR Yamanote Line (10 min)
		103	Apt.		
Address	1-9-12, Nakameguro, Meguro-Ku, Tokyo				



Lease Conditions	
LAYOUT	1 BR
SIZE	44.5 m ² /478.99 ft ²
RENT	JPY 220,000 / month
Management Fee	JPY10,000/month
Deposit	-
Key Money	-
Lease Term	Standard lease for 24 months
Available	Now
Renewal Fee	1 month
Agent Fee	1 month + tax
Other Info	Key Replacement Fee : JPY25,000 Tax not included / Guarantor Company : TBC / Auto lock / Air-Con / Separated Toilet / Balcony / Internet Included / Penalty Fee for Early Cancellation / Flooring / Bathroom dryer / WIC

Building Information			
Completion	Aug, 2020	Earthquake Resistance	New
Structure	RC, 4 floors above and 1 basement floors		
Car Parking	N/A		
Bicycle Parking	N/A		
Music Instrument	-	Pet	-
Facilities	Within 20 min to Roppongi by train / Delivery box / Security / 24h Garbage Drop-off / Low-rise / Newly-built (~7 y/o)		

Remarks
Renters Insurance : Required

*The actual Layout & Size may differ slightly from this floor plans & pictures.



HOUSEREP TOKYO INC.

ハウズレップトーキョー株式会社

#301, 1-4-15, Hiroo, Shibuya-ku, Tokyo 150-0012, Japan

+81 (0)3 6427 5860

inquiry@housserrep-tokyo.com

Transaction Type : Intermediate

Agent Fee : 1 month + tax

Website : www.housserrep-tokyo.com

