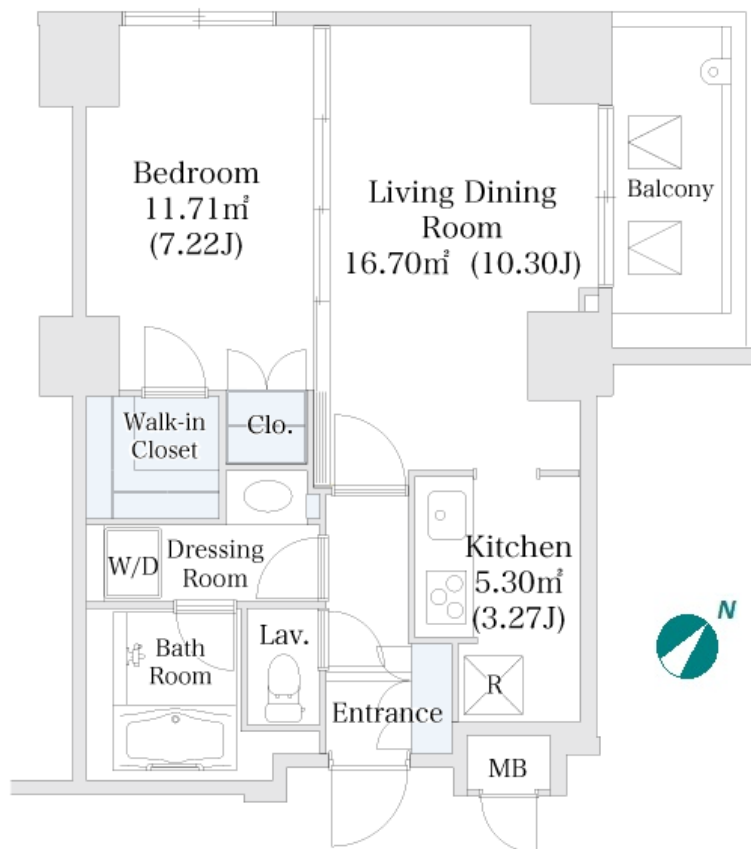


| | | | | | |
|---------------|----------------------------------|----------|------|--------|--|
| Property Name | KACHIDOKI HEIGHTS | Unit No. | TYPE | Access | Kachidoki Station on Oedo Line (4 min) |
| | | 208 | Apt. | | |
| Address | 3-9-7, Kachidoki, Chuo-Ku, Tokyo | | | | |

Mid-rise Apt. in Kachidoki, easy access to Tokyo station / Roppongi / Azabujuban / Shinjuku



*The actual Layout & Size may differ slightly from this floor plans & pictures.

| Lease Conditions | |
|------------------|---|
| LAYOUT | 1 BR |
| SIZE | 49.5 m²/532.81 ft² |
| RENT | JPY 180,000 / month |
| Management Fee | JPY15,000/month |
| Deposit | 2 months |
| Key Money | - |
| Lease Term | Fixed term lease for 36 months |
| Available | End, Oct, 2024 |
| Renewal Fee | - |
| Agent Fee | 1 month + tax |
| Other Info | Depreciation : 1 month / Guarantor Company : TBC / No Key Money / Auto lock / Air-Con / Separated Toilet / Balcony / Internet (Extra Charge) / Penalty Fee for Early Cancellation / Musical Instrument Negotiable / Flooring / Bathroom dryer / WIC / Corner Unit |

| Building Information | | | |
|----------------------|--|-----------------------|-----|
| Completion | Jul, 2002 | Earthquake Resistance | New |
| Structure | SRC, 8 floors above and 1 basement floors | | |
| Car Parking | JPY45,000 ~ 55,000/ month | | |
| Bicycle Parking | TBC | | |
| Music Instrument | Negotiable | Pet | - |
| Facilities | Motorcycle Parking (TBC) / Trunk Room (TBC) / Within 20 min to Roppongi by train / Within 20 min to Tokyo station by car / Near Large Parks / Delivery box / Elevator / Close to Station | | |

| Remarks |
|---------|
| |



HOUSEREP TOKYO INC.

ハウズレップトーキョー株式会社

#301, 1-4-15, Hiroo, Shibuya-ku, Tokyo 150-0012, Japan

+81 (0)3 6427 5860

inquiry@housserrep-tokyo.com

Transaction Type : Intermediate

Agent Fee : 1 month + tax

Website : www.housserrep-tokyo.com

