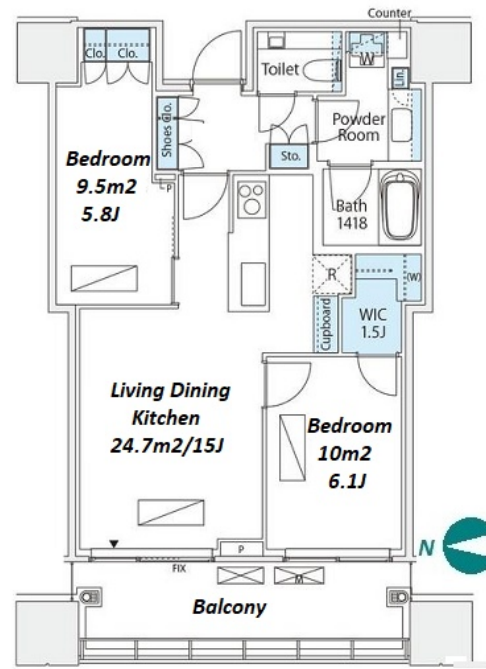
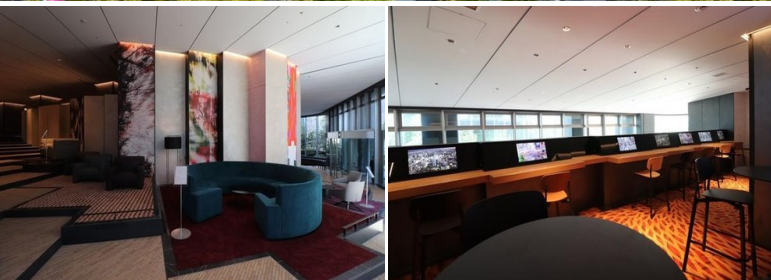


Property Name	PARK COURT SHIBUYA THE TOWER	Unit No.	TYPE	Access	Shibuya Station on Denentoshi Line (8 min) Shibuya Station on Keio Inokashira Line (9 min) Shibuya Station on JR Yamanote Line (9 min)
		3206	Apt.		
Address	1-12, Udagawacho, Shibuya-Ku, Tokyo				



Lease Conditions

LAYOUT	2 BR	
SIZE	62.3 m ² /670.59 ft ²	
RENT	JPY 600,000 / month	
Management Fee	-	
Deposit	2 months	Key Money 1 month
Lease Term	Fixed term lease for months	
Available	Now	
Renewal Fee	-	
Agent Fee	1 month + tax	
Other Info	Key Replacement Fee : JPY20,000 Tax not included / Auto lock / Air-Con / Flooring / Floor Heating / Dishwasher / Bathroom dryer / Private Yard	

Building Information

Completion	Aug, 2020	Earthquake Resistance	New
Structure	RC, 39 floors above and 4 basement floors		
Car Parking	N/A		
Bicycle Parking	extra charge		
Music Instrument	-	Pet	-
Facilities	Trunk Room (JPY3,150 + tax / month) / Near Large Parks / Front desk / Concierge / Janitor / Delivery box / Elevator / Security / 24h Garbage Drop-off / Fitness / Gym / High-rise / Newly-built (~7 y/o)		

Remarks

Fixed term lease : Until 31/Oct/2028 / Renters Insurance : Required

*The actual Layout & Size may differ slightly from this floor plans & pictures.



HOUSEREP TOKYO INC.

ハウスレップトーキョー株式会社

#301, 1-4-15, Hiroo, Shibuya-ku, Tokyo 150-0012, Japan

+81 (0)3 6427 5860

inquiry@housserep-tokyo.com

Transaction Type : Intermediate

Agent Fee : 1 month + tax

Website : www.housserep-tokyo.com

