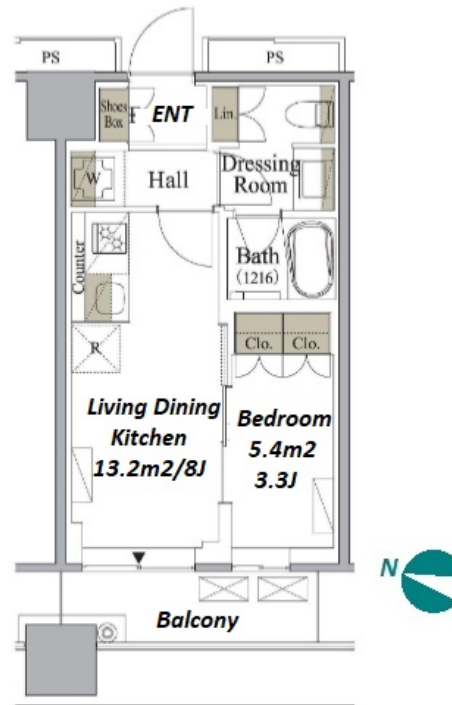


Property Name	MEGURO MARC RESIDENCE TOWER	Unit No.	TYPE	Access	Meguro Station on JR Yamanote Line (8 min) Meguro Station on Mita Line (8 min) Gotanda Station on JR Yamanote Line (9 min)
		1402	Apt.		
Address	3-4-10, Nishigotanda, Shinagawa-Ku, Tokyo				

Modern Stylish Tower Residence in Meguro



Lease Conditions		
LAYOUT	1 BR	
SIZE	30.31 m ² /326.25 ft ²	
RENT	JPY 185,000 / month	
Management Fee	-	
Deposit	2 months	Key Money 1 month
Lease Term	Fixed term lease for 24 months	
Available	Early, Oct, 2024	
Renewal Fee	-	
Agent Fee	1 month + tax	
Other Info	Auto lock / Air-Con / Separated Toilet / Balcony / Internet Included / Penalty Fee for Early Cancellation / Flooring / Dishwasher / Bathroom dryer	

Building Information		
Completion	Oct, 2022	Earthquake Resistance New
Structure	RC, 24 floors above	
Car Parking	N/A	
Bicycle Parking	JPY300 ~ 3,000 + tax / month	
Music Instrument	-	Pet Allowed
Facilities	Motorcycle Parking (JPY5,000 ~ 15,000 + tax / month) / Concierge / Elevator / 24h Garbage Drop-off / High-rise / Newly-built (~7 y/o)	

Remarks
Fixed term lease : Re-contract fee : 1 month / Renters Insurance : Required / Pet:additional deposit (1 month)

*The actual Layout & Size may differ slightly from this floor plans & pictures.



HOUSEREP TOKYO INC.

ハウスレップトーキョー株式会社

#301, 1-4-15, Hiroo, Shibuya-ku, Tokyo 150-0012, Japan

+81 (0)3 6427 5860

inquiry@housserep-tokyo.com

Transaction Type : Intermediate

Agent Fee : 1 month + tax

Website : www.housserep-tokyo.com

