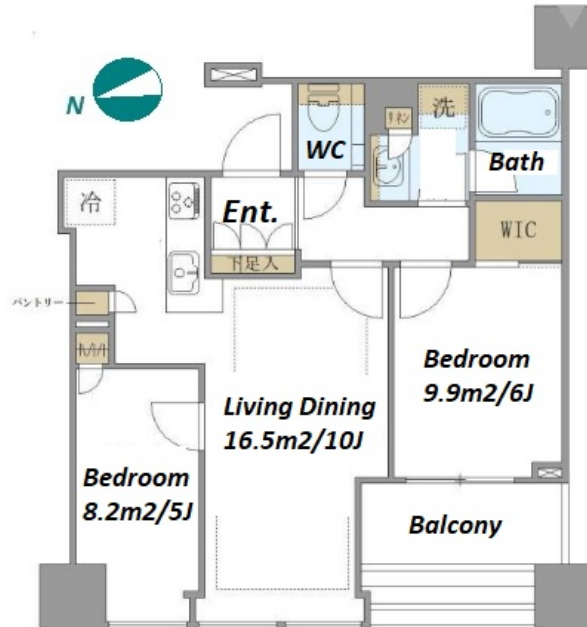


Property Name	SHIROKANE THE SKY	Unit No.	TYPE	Access	Shirokanetakanawa Station on Namboku Line (3 min) Azabujuban Station on Namboku Line (11 min)
		W1321	Apt.		
Address	1-2-1, Shirokane, Minato-Ku, Tokyo				



Lease Conditions			
LAYOUT	2 BR		
SIZE	56.72 m²/610.52 ft²		
RENT	JPY 445,000 / month		
Management Fee	JPY15,000/month		
Deposit	2 months	Key Money	1 month
Lease Term	Fixed term lease for 24 months		
Available	Mid, Oct, 2024		
Renewal Fee	-		
Agent Fee	1 month + tax		
Other Info	Air-Con / Separated Toilet / Balcony / Internet (Extra Charge) / Garden/Terrace / Flooring / Floor Heating / Dishwasher / Bathroom dryer		

Building Information			
Completion	Dec, 2022	Earthquake Resistance	New
Structure	RC, 45 floors above and 1 basement floors		
Car Parking	N/A		
Bicycle Parking	-		
Music Instrument	-	Pet	N/A
Facilities	Gym (JPY1,000 + tax / month) / Front desk / Concierge / Delivery box / Elevator / Close to Station / 24h Garbage Drop-off / Fitness / Gym / High-rise / Newly-built (~7 y/o)		

Remarks
Renters Insurance : Required

\*The actual Layout & Size may differ slightly from this floor plans & pictures.



HOUSEREP TOKYO INC.

ハウスレップト-キョ-株式会社

#301, 1-4-15, Hiroo, Shibuya-ku, Tokyo 150-0012, Japan

+81 (0)3 6427 5860 inquiry@housserrep-tokyo.com

Transaction Type : Intermediate

Agent Fee : 1 month + tax

Website : www.housserrep-tokyo.com

