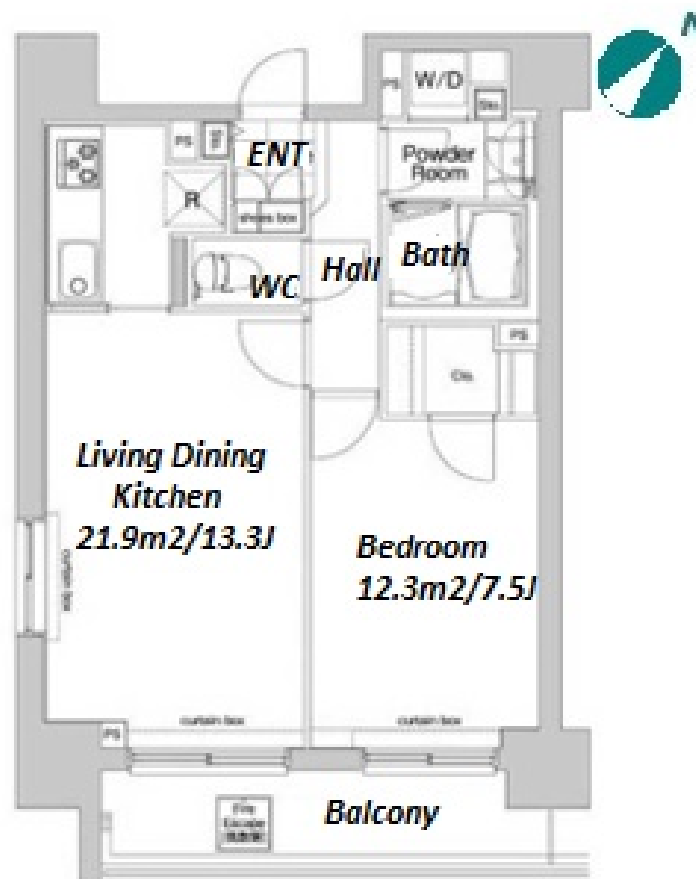


Property Name	COMFORIA MITA EAST	Unit No.	TYPE	Access	Mita Station on Toei Asakusa Line (5 min) Mita Station on Mita Line (5 min) Tamachi Station on JR Yamanote Line (7 min)
		1307	Apt.		
Address	4-18-1, Shiba, Minato-Ku, Tokyo				

Mid-rise Apt. in Mita, near Tamachi



Lease Conditions	
LAYOUT	1 BR
SIZE	50.28 m²/541.2 ft²
RENT	JPY 263,000 / month
Management Fee	JPY10,000/month
Deposit	2 months
Key Money	-
Lease Term	Standard lease for 24 months
Available	End, Oct, 2024
Renewal Fee	1 month
Agent Fee	1 month + tax
Other Info	Key Replacement Fee : JPY30,000 Tax not included / Guarantor Company : TBC / No Key Money / Auto lock / Air-Con / Separated Toilet / Balcony / Penalty Fee for Early Cancellation / CS/CATV / Flooring / Bathroom dryer

Building Information			
Completion	Jan, 2008	Earthquake Resistance	New
Structure	RC, 13 floors above		
Car Parking	TBC		
Bicycle Parking	(Included)		
Music Instrument	-	Pet	Allowed
Facilities	Within 20 min to Roppongi by train / Within 20 min to Tokyo station by car / Near Large Parks / Delivery box / Elevator		

Remarks
Renters Insurance : Required / Pet:additional deposit (1 month) / Pet : a small dog or up to two cats

*The actual Layout & Size may differ slightly from this floor plans & pictures.



HOUSEREP TOKYO INC.

ハウズレップトーキョー株式会社

#301, 1-4-15, Hiroo, Shibuya-ku, Tokyo 150-0012, Japan

+81 (0)3 6427 5860

inquiry@housserep-tokyo.com

Transaction Type : Intermediate

Agent Fee : 1 month + tax

Website : www.housserep-tokyo.com

