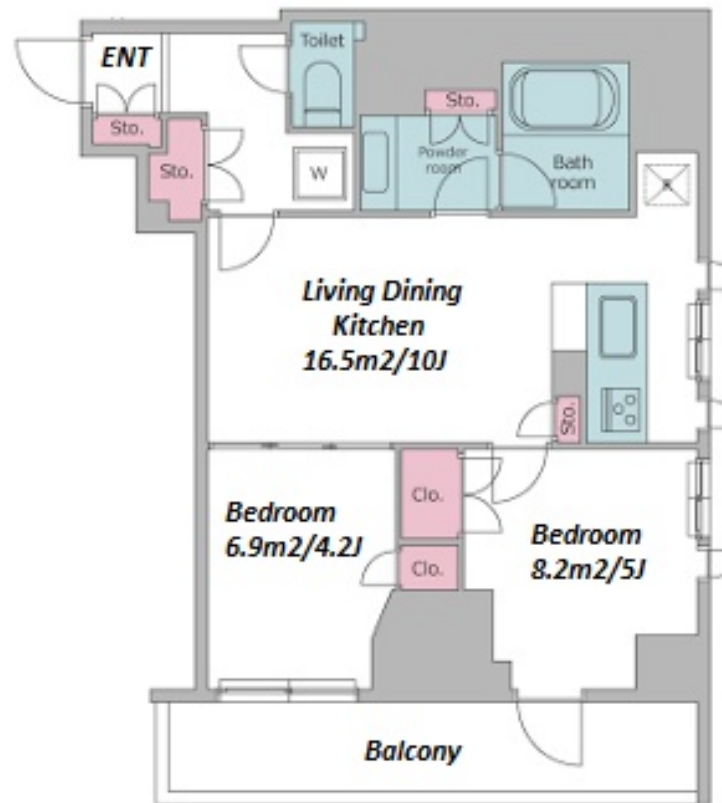


| | | | | | |
|---------------|--------------------------------|----------|------|--------|--|
| Property Name | RESIDIA BUKYO HONGOU IV | Unit No. | TYPE | Access | Honngousannchoume Station on Oedo Line (3 min) Honngousannchoume Station on Marunouchi Line (5 min) |
| | | 203 | Apt. | | |
| Address | 7-2-2, Hongo, Bunkyo-Ku, Tokyo | | | | |

Modern Mid Rise Apt. in Hongo, near University of Tokyo



| Lease Conditions | | |
|------------------|--|-------------------|
| LAYOUT | 2 BR | |
| SIZE | 48.89 m²/526.24 ft² | |
| RENT | JPY 245,000 / month | |
| Management Fee | JPY 15,000/month | |
| Deposit | 2 months | Key Money 1 month |
| Lease Term | Standard lease for 24 months | |
| Available | Mid, Oct, 2024 | |
| Renewal Fee | 1 month | |
| Agent Fee | 1 month + tax | |
| Other Info | Key Replacement Fee : JPY25,000 Tax not included / Guarantor Company : TBC / Auto lock / Air-Con / Separated Toilet / Balcony / Internet Included / Penalty Fee for Early Cancellation / Flooring / Bathroom dryer | |

| Building Information | | |
|----------------------|--|---------------------------|
| Completion | Jan, 2018 | Earthquake Resistance New |
| Structure | RC, 15 floors above | |
| Car Parking | - | |
| Bicycle Parking | - | |
| Music Instrument | - | Pet N/A |
| Facilities | Delivery box / Elevator / Close to Station / 24h Garbage Drop-off / Newly-built (~7 y/o) | |

| Remarks |
|--|
| Renters Insurance : Required / Tenant support fee: JPY.10,000+tax/2years |

*The actual Layout & Size may differ slightly from this floor plans & pictures.



HOUSEREP TOKYO INC.

ハウスレップトーキョー株式会社

#301, 1-4-15, Hiroo, Shibuya-ku, Tokyo 150-0012, Japan

+81 (0)3 6427 5860

inquiry@housserep-tokyo.com

Transaction Type : Intermediate

Agent Fee : 1 month + tax

Website : www.housserep-tokyo.com

