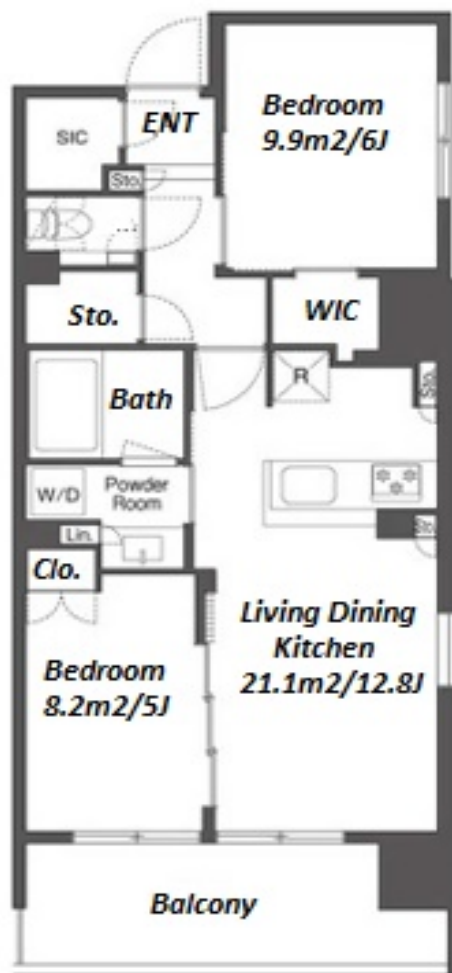
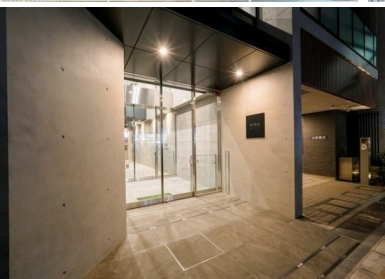


Property Name	MIRYA RESIDENCE NIHOMBASHI NINGYOCHO	Unit No.	TYPE	Access	Suitennguumae Station on Hanzomon Line (3 min)
		1209	Apt.		Suitennguumae Station on Hibiya Line (3 min)
Address	2-35-15, Nihombashinginyocho, Chuo-Ku, Tokyo				Ninngyouchou Station on Hibiya Line (5 min)
					Ninngyouchou Station on Hanzomon Line (5 min)

Modern Mid Rise Apt. in a Lively Local Neighborhood of Nihombashi Ningyocho



*The actual Layout & Size may differ slightly from this floor plans & pictures.

Lease Conditions	
LAYOUT	2 BR
SIZE	57.42 m²/618.06 ft²
RENT	JPY 413,000 / month
Management Fee	JPY20,000/month
Deposit	2 months
Key Money	-
Lease Term	Standard lease for 24 months
Available	Now
Renewal Fee	1 month
Agent Fee	1 month + tax
Other Info	Guarantor Company : TBC / No Key Money / Auto lock / Air-Con / Separated Toilet / Balcony / Penalty Fee for Early Cancellation / Flooring / Floor Heating / Dishwasher / Bathroom dryer / WIC

Building Information			
Completion	Jan, 2024	Earthquake Resistance	New
Structure	RC, 13 floors above		
Car Parking	extra charge		
Bicycle Parking	(Included)		
Music Instrument	-	Pet	Negotiable
Facilities	Delivery box / 24h Garbage Drop-off / Newly-built (~1 y/o)		

Remarks
Renters Insurance : Required



HOUSEREP TOKYO INC.

ハウスレップトーキョー株式会社

#301, 1-4-15, Hiroo, Shibuya-ku, Tokyo 150-0012, Japan

+81 (0)3 6427 5860

inquiry@housserrep-tokyo.com

Transaction Type : Intermediate

Agent Fee : 1 month + tax

Website : www.housserrep-tokyo.com

