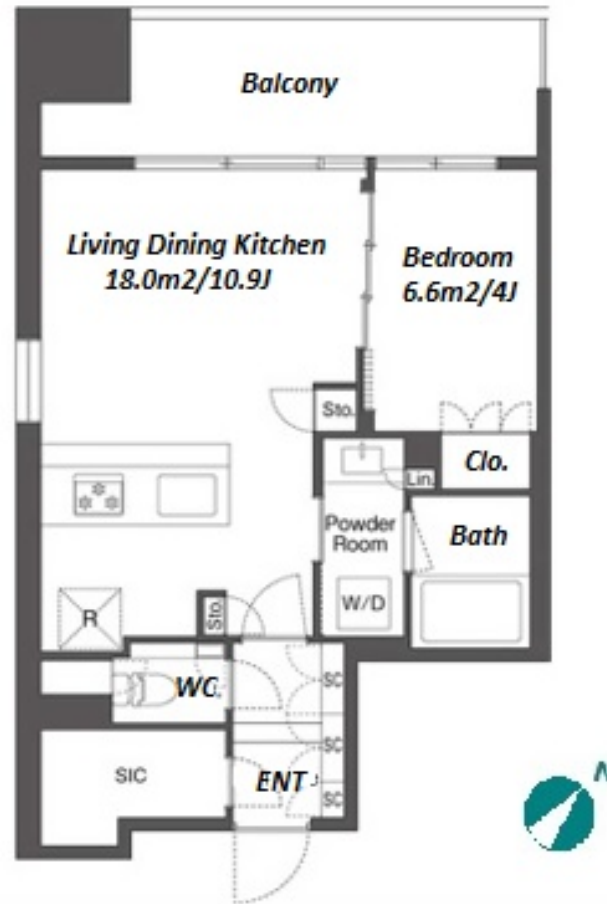
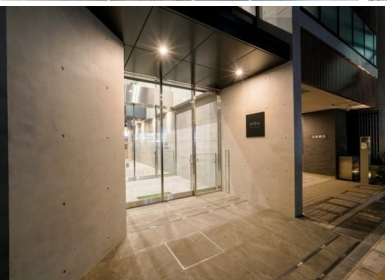


Property Name	MIRYA RESIDENCE NIHOMBASHI NINGYOCHO	Unit No.	TYPE	Access	Suitennguumae Station on Hanzomon Line (3 min)
		201	Apt.		Suitennguumae Station on Hibiya Line (3 min) Ninngyouchou Station on Hibiya Line (5 min) Ninngyouchou Station on Hanzomon Line (5 min)
Address	2-35-15, Nihombashinginyocho, Chuo-Ku, Tokyo				

Modern Mid Rise Apt. in a Lively Local Neighborhood of Nihombashi Ningyocho



Lease Conditions	
LAYOUT	1 BR
SIZE	38.96 m²/419.36 ft²
RENT	JPY 229,000 / month
Management Fee	JPY15,000/month
Deposit	2 months
Key Money	-
Lease Term	Standard lease for 24 months
Available	Now
Renewal Fee	1 month
Agent Fee	1 month + tax
Other Info	Guarantor Company : TBC / No Key Money / Auto lock / Air-Con / Separated Toilet / Balcony / Penalty Fee for Early Cancellation / Flooring / Floor Heating / Dishwasher / Bathroom dryer

Building Information	
Completion	Jan, 2024
Earthquake Resistance	New
Structure	RC, 13 floors above
Car Parking	extra charge
Bicycle Parking	(Included)
Music Instrument	-
Pet	Negotiable
Facilities	Delivery box / 24h Garbage Drop-off / Newly-built (~1 y/o)

Remarks
Renters Insurance : Required

*The actual Layout & Size may differ slightly from this floor plans & pictures.



HOUSEREP TOKYO INC.

ハウスレップトーキョー株式会社

#301, 1-4-15, Hiroo, Shibuya-ku, Tokyo 150-0012, Japan

+81 (0)3 6427 5860

inquiry@housserrep-tokyo.com

Transaction Type : Intermediate

Agent Fee : 1 month + tax

Website : www.housserrep-tokyo.com

