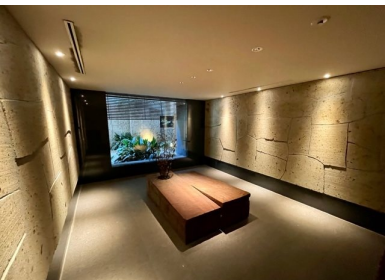


Property Name	CHESTER COURT OCHANOMIZU	Unit No.	TYPE	Access	Ogawamachi Station on Toei Shinjuku Line (3 min) Shinnochanomizu Station on Chiyoda Line (5 min) Awajichou Station on Marunouchi Line (6 min) Jinnbouchou Station on Hanzomon Line (6 min)
		902	Apt.		
Address	3-2, Kandaogawamachi, Chiyoda-Ku, Tokyo				

Modern Mid Rise Apt. in Kanda, near 4 Metro Stn.



\*The actual Layout & Size may differ slightly from this floor plans & pictures.

Lease Conditions	
LAYOUT	1 BR
SIZE	44.86 m <sup>2</sup> /482.86 ft <sup>2</sup>
RENT	JPY 224,000 / month
Management Fee	JPY15,000/month
Deposit	2 months
Key Money	-
Lease Term	Standard lease for 24 months
Available	Mid, Sep, 2024
Renewal Fee	1 month
Agent Fee	1 month + tax
Other Info	Key Replacement Fee : JPY18,000 Tax not included / Guarantor Company : TBC / No Key Money / Auto lock / Air-Con / Separated Toilet / Balcony / Penalty Fee for Early Cancellation / Flooring / Bathroom dryer / Corner Unit

Building Information			
Completion	Mar, 2007	Earthquake Resistance	New
Structure	SRC, 14 floors above		
Car Parking	TBC		
Bicycle Parking	JPY300 + tax / month		
Music Instrument	-	Pet	Negotiable
Facilities	Motorcycle Parking (TBC) / Delivery box / Elevator / Close to Station		

Remarks
Renters Insurance : Required



HOUSEREP TOKYO INC.

ハウスレップトーキョー株式会社

#301, 1-4-15, Hiroo, Shibuya-ku, Tokyo 150-0012, Japan

+81 (0)3 6427 5860

inquiry@housserep-tokyo.com

Transaction Type : Intermediate

Agent Fee : 1 month + tax

Website : www.housserep-tokyo.com

