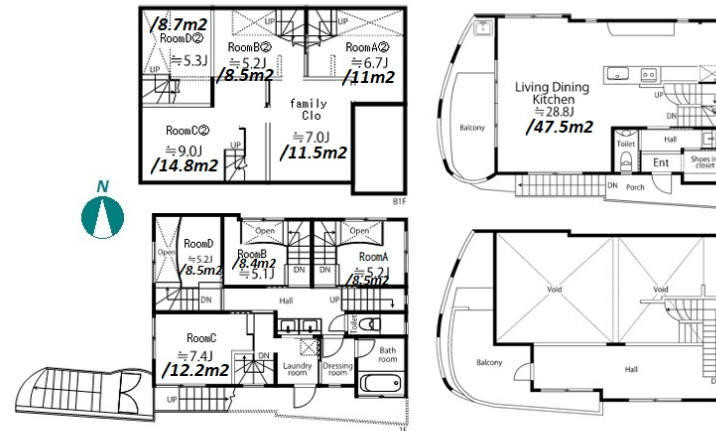


Property Name	TAIRAMACHI 111 HOUSE	Unit No.	TYPE	Access	Toritsudaigaku Station on Toyoko Line (5 min)
		-	House		
Address	1-11-11, Tairamachi, Meguro-Ku, Tokyo				

Cozy House in Calm Residential Area, close to Toritsudaigaku Sta.



Lease Conditions			
LAYOUT	4 BR+S		
SIZE	177.75 m ² /1913.28 ft ²		
RENT	JPY 1,150,000 / month		
Management Fee	-		
Deposit	2 months	Key Money	1 month
Lease Term	Fixed term lease for 36 months		
Available	Now		
Renewal Fee	-		
Agent Fee	1 month + tax		
Other Info	Key Replacement Fee : JPY60,000 Tax not included / Guarantor Company : TBC / Air-Con / Separated Toilet / Balcony / Loft/Maisonnette / No Smoking / Musical Instrument Negotiable / Flooring / WIC / 2 Car Parks / 2 Toilets		

Building Information			
Completion	Sep, 2019	Earthquake Resistance	New
Structure	RC, 3 floors above and 1 basement floors		
Car Parking	for 2 spaces (Included)		
Bicycle Parking	(Included)		
Music Instrument	Negotiable	Pet	N/A
Facilities	House / Close to Station / Newly-built (~7 y/o)		

Remarks
Renters Insurance : Required

*The actual Layout & Size may differ slightly from this floor plans & pictures.



HOUSEREP TOKYO INC.

ハウスレップトーキョー株式会社

#301, 1-4-15, Hiroo, Shibuya-ku, Tokyo 150-0012, Japan

+81 (0)3 6427 5860 inquiry@housserrep-tokyo.com

Transaction Type : Intermediate

Agent Fee : 1 month + tax

Website : www.housserrep-tokyo.com

