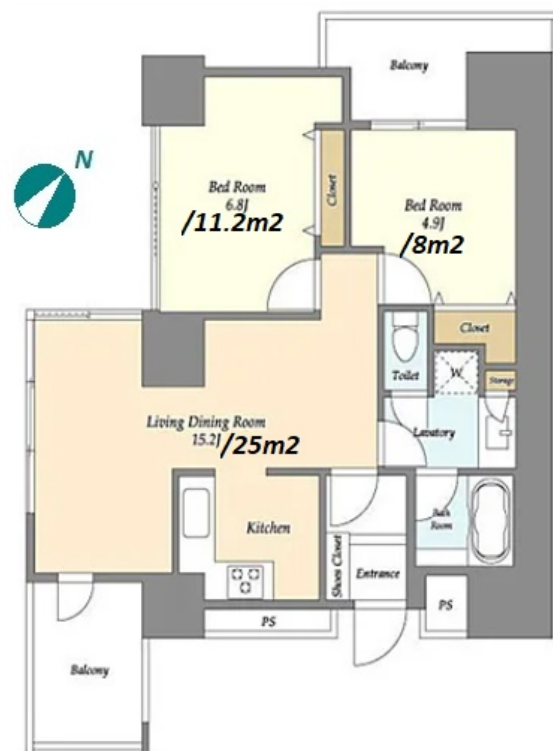
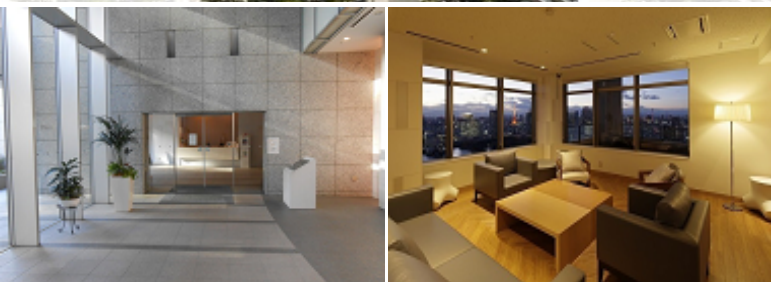


Property Name	PLAZA TOWER KACHIDOKI	Unit No.	TYPE	Access	Kachidoki Station on Oedo Line (2 min) Tsukiji Station on Hibiya Line (11 min)
		1812	Apt.		
Address	1-13-6, Kachidoki, Chuo-Ku, Tokyo				

Luxury High Rise Apt. in "Kachidoki" Area Free Internet Access / Close to Harumi Triton



Lease Conditions	
LAYOUT	2 BR
SIZE	61.45 m²/661.44 ft²
RENT	JPY 222,000 / month
Management Fee	JPY20,000/month
Deposit	1 month
Key Money	-
Lease Term	Fixed term lease for 24 months
Available	Now
Renewal Fee	-
Agent Fee	1 month + tax
Other Info	Key Replacement Fee : JPY20,000 Tax not included / Guarantor Company : TBC / Auto lock / Air-Con / Separated Toilet / Balcony / Internet Included / Flooring / Floor Heating / Bathroom dryer

Building Information			
Completion	Feb, 2004	Earthquake Resistance	New
Structure	RC, 43 floors above		
Car Parking	N/A		
Bicycle Parking	TBC		
Music Instrument	-	Pet	-
Facilities	Motorcycle Parking (JPY5,000 ~ 8,000/ month) / Trunk Room (TBC) / Within 20 min walk to Roppongi / Near Large Parks / Front desk / Delivery box / Elevator		

Remarks
Renters Insurance : Required

\*The actual Layout & Size may differ slightly from this floor plans & pictures.



HOUSEREP TOKYO INC.

ハウスレップトーキョー株式会社

#301, 1-4-15, Hiroo, Shibuya-ku, Tokyo 150-0012, Japan

+81 (0)3 6427 5860

inquiry@housserrep-tokyo.com

Transaction Type : Intermediate

Agent Fee : 1 month + tax

Website : www.housserrep-tokyo.com

