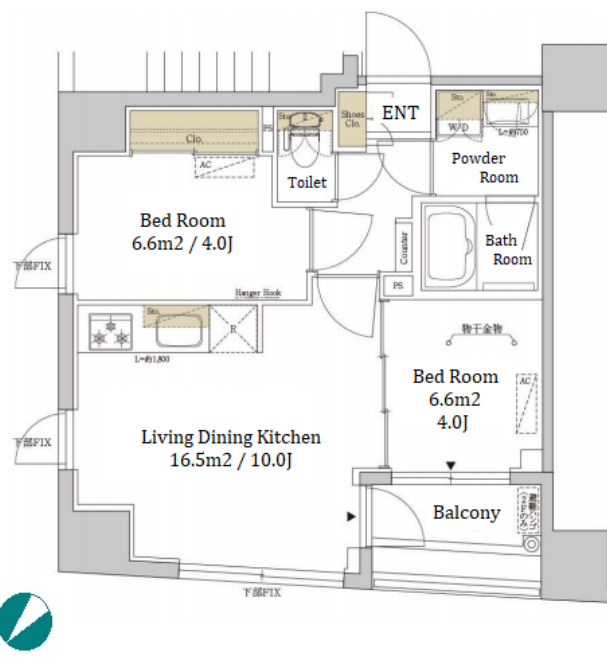


Property Name	URBANEX NIHONBASHI SUITENGU	Unit No.	TYPE	Access	Suitennguumae Station on Hanzomon Line (3 min) Ninngyouchou Station on Hibiya Line (5 min) Kayabachou Station on Tozai Line (6 min)
		501	Apt.		
Address	1-18-4, Nihombashikakigaracho, Chuo-Ku, Tokyo				

Stylish Mid Rise Apt. in Nihonbashi, near Suitengu and Ningyocho stn.



Lease Conditions	
LAYOUT	2 BR
SIZE	40.47 m ² /435.61 ft ²
RENT	JPY 224,000 / month
Management Fee	JPY15,000/month
Deposit	1 month
Key Money	-
Lease Term	Standard lease for 24 months
Available	End, Oct, 2024
Renewal Fee	1 month
Agent Fee	1 month + tax
Other Info	Key Replacement Fee : JPY20,000 Tax not included / No Key Money / Free rent / Auto lock / Air-Con / Separated Toilet / Balcony / Internet (Extra Charge) / Penalty Fee for Early Cancellation / Flooring / Bathroom dryer

Building Information	
Completion	Jan, 2020
Earthquake Resistance	New
Structure	RC, 10 floors above
Car Parking	N/A
Bicycle Parking	JPY500 + tax / month
Music Instrument	-
Pet	N/A
Facilities	Janitor / Delivery box / Elevator / Security / Close to Station / Newly-built (~7 y/o)

Remarks
Renters Insurance : Required

*The actual Layout & Size may differ slightly from this floor plans & pictures.



HOUSEREP TOKYO INC.

ハウスレップトーキョー株式会社

#301, 1-4-15, Hiroo, Shibuya-ku, Tokyo 150-0012, Japan

+81 (0)3 6427 5860

inquiry@housserrep-tokyo.com

Transaction Type : Intermediate

Agent Fee : 1 month + tax

Website : www.housserrep-tokyo.com

