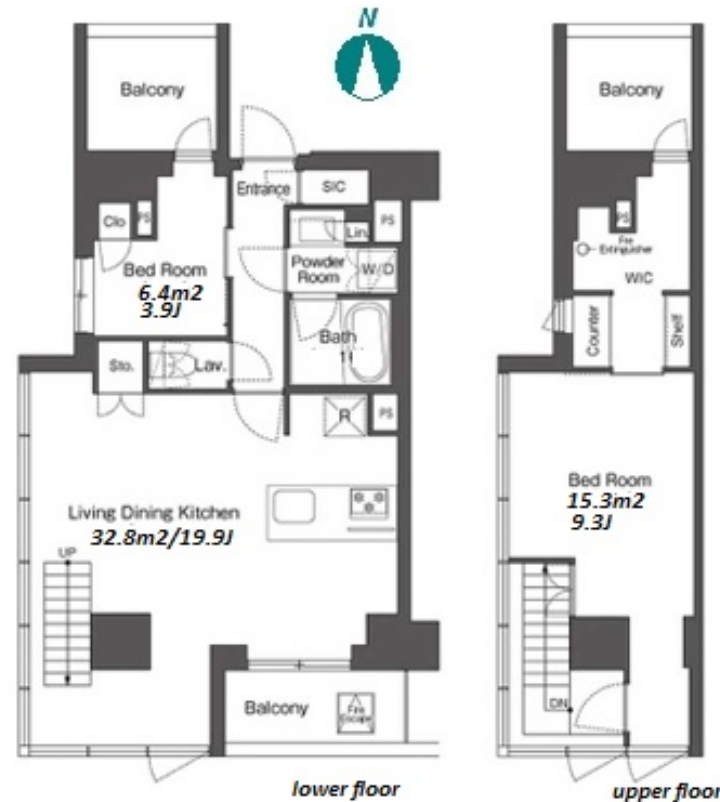
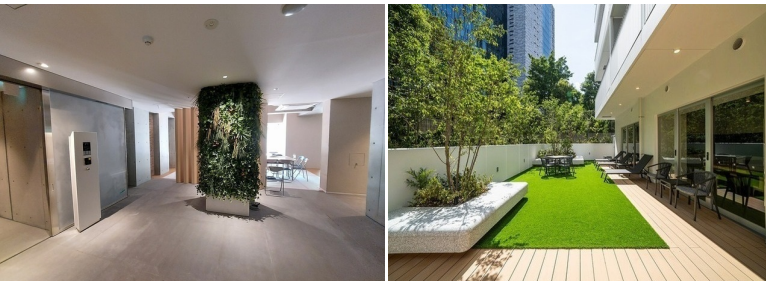


Property Name	COMFORIA HIGASHISHINJUKU	Unit No.	TYPE	Access	Higashishinnjuku Station on Oedo Line (2 min) Shinnjukusannchoume Station on Marunouchi Line (9 min)
		1018	Apt.		
Address	6-27-48, Shinjuku, Shinjuku-Ku, Tokyo				

Mid rise apartment in TOKYO near Higashishinjuku Sta.



Lease Conditions	
LAYOUT	2 BR
SIZE	80.3 m ² /864.34 ft ²
RENT	JPY 585,000 / month
Management Fee	JPY15,000/month
Deposit	2 months
Key Money	-
Lease Term	Standard lease for 24 months
Available	End, Sep, 2024
Renewal Fee	1 month
Agent Fee	1 month + tax
Other Info	Key Replacement Fee : JPY30,000 Tax not included / Guarantor Company : TBC / No Key Money / Auto lock / Air-Con / Separated Toilet / Balcony / Loft/Maisonnette / Internet Included / Penalty Fee for Early Cancellation / Floor Heating / Bathroom dryer / WIC

Building Information			
Completion	Jul, 2023	Earthquake Resistance	New
Structure	RC, 14 floors above		
Car Parking	-		
Bicycle Parking	(Included)		
Music Instrument	-	Pet	Allowed
Facilities	Delivery box / Elevator / Security / Close to Station / 24h Garbage Drop-off / Newly-built (~1 y/o)		

Remarks
Renters Insurance : Required / Pet:additional deposit (1 month) / Pet : a small dog or up to two cats

*The actual Layout & Size may differ slightly from this floor plans & pictures.



HOUSEREP TOKYO INC.

ハウスレップトーキョー株式会社

#301, 1-4-15, Hiroo, Shibuya-ku, Tokyo 150-0012, Japan

+81 (0)3 6427 5860

inquiry@housserrep-tokyo.com

Transaction Type : Intermediate

Agent Fee : 1 month + tax

Website : www.housserrep-tokyo.com

