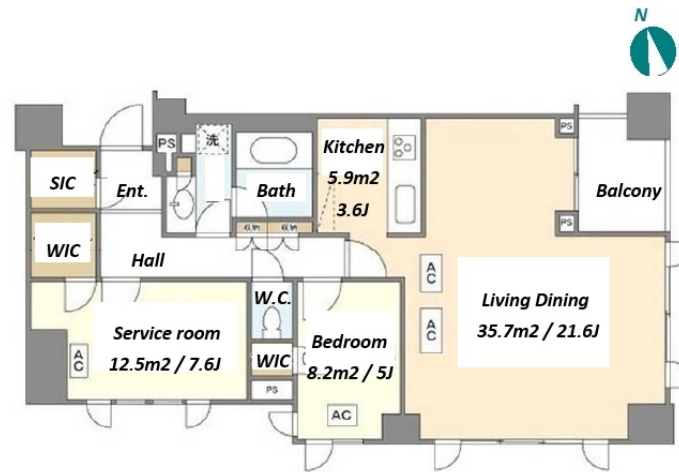


Property Name	MID GARDEN AKASAKA HIKAWA	Unit No.	TYPE	Access	Akasaka Station on Chiyoda Line (6 min) Nogizaka Station on Chiyoda Line (8 min)
		408	Apt.		
Address	6-19-54, Akasaka, Minato-Ku, Tokyo				

Luxury Apt. near Akasaka and Roppongi



Lease Conditions	
LAYOUT	1 BR+S
SIZE	86.27 m²/928.6 ft²
RENT	JPY 570,000 / month
Management Fee	JPY20,000/month
Deposit	1 month
Key Money	2 months
Lease Term	Standard lease for 24 months
Available	End, Oct, 2024
Renewal Fee	1 month
Agent Fee	1 month + tax
Other Info	Auto lock / Air-Con / Separated Toilet / Balcony / Internet (Extra Charge) / Flooring / Floor Heating / Bathroom dryer / WIC / Corner Unit

Building Information	
Completion	Mar, 2013
Earthquake Resistance	New
Structure	RC, 10 floors above and 1 basement floors
Car Parking	extra charge
Bicycle Parking	-
Music Instrument	-
Pet	Negotiable
Facilities	Within 20 min walk to Roppongi / Within 20 min to Roppongi by train / Within 20 min to Tokyo station by car / Delivery box / Elevator / 24h Garbage Drop-off

Remarks
Renters Insurance : Required

*The actual Layout & Size may differ slightly from this floor plans & pictures.



HOUSEREP TOKYO INC.

ハウスレップトーキョー株式会社

#301, 1-4-15, Hiroo, Shibuya-ku, Tokyo 150-0012, Japan

+81 (0)3 6427 5860

inquiry@housserrep-tokyo.com

Transaction Type : Intermediate

Agent Fee : 1 month + tax

Website : www.housserrep-tokyo.com

