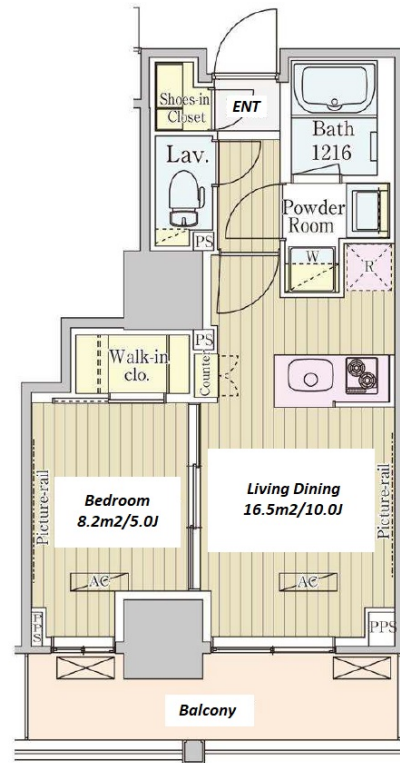
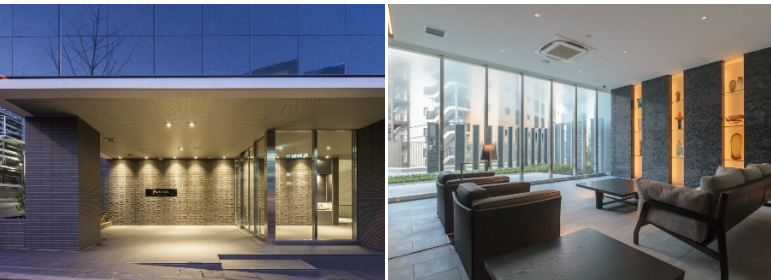


Property Name	PARK AXIS OCHANOMIZU	Unit No.	TYPE	Access	Akihabara Station on JR Yamanote Line (7 min) Ochanomizu Station on JR Chuo-Sobu Line (8 min) Ochanomizu Station on Chiyoda Line (8 min)
		903	Apt.		
Address	1-2-7, Yushima, Bunkyo-Ku, Tokyo				

High-rise Apt in Ochanomizu, near Akihabara



Lease Conditions

LAYOUT	1 BR		
SIZE	36.07 m ² /388.25 ft ²		
RENT	JPY 184,000 / month		
Management Fee	JPY 10,000/month		
Deposit	2 months	Key Money	1 month
Lease Term	Standard lease for 24 months		
Available	End, Sep, 2024		
Renewal Fee	1 month		
Agent Fee	1 month + tax		
Other Info	Key Replacement Fee : JPY20,000 Tax not included / Guarantor Company : TBC / Auto lock / Air-Con / Separated Toilet / Balcony / Internet Included / Penalty Fee for Early Cancellation / CS/CATV / Flooring / Bathroom dryer / WIC		

Building Information

Completion	Mar, 2017	Earthquake Resistance	New
Structure	RC, 17 floors above		
Car Parking	extra charge		
Bicycle Parking	for 1 space (Included)		
Music Instrument	-	Pet	N/A

Facilities	Delivery box / Elevator / High-rise / Newly-built (~7 y/o)
------------	--

Remarks

Remarks	Renters Insurance : Required
---------	------------------------------

*The actual Layout & Size may differ slightly from this floor plans & pictures.



HOUSEREP TOKYO INC.

ハウスレップトーキョー株式会社

#301, 1-4-15, Hiroo, Shibuya-ku, Tokyo 150-0012, Japan

+81 (0)3 6427 5860

inquiry@housserrep-tokyo.com

Transaction Type : Intermediate

Agent Fee : 1 month + tax

Website : www.housserrep-tokyo.com

