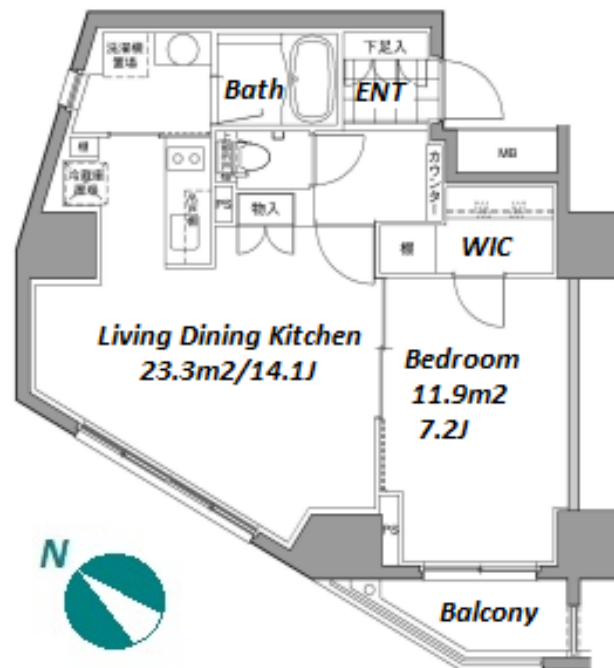


| | | | | | |
|---------------|---------------------------------------|----------|------|--------|---|
| Property Name | JP NOIE KOISHIKAWA TOMISAKA | Unit No. | TYPE | Access | Kourakuenn Station on Namboku Line (7 min) Kasuga Station on Oedo Line (8 min) |
| | | 1201 | Apt. | | |
| Address | 2-11-15, Koishikawa, Bunkyo-Ku, Tokyo | | | | |

Pet friendly Apt. near "Tokyo Dome" and "Koishikawa Korakuen Garden"



| Lease Conditions | |
|------------------|---|
| LAYOUT | 1 BR |
| SIZE | 50.45 m²/543.03 ft² |
| RENT | JPY 209,000 / month |
| Management Fee | JPY15,000/month |
| Deposit | 2 months |
| Key Money | - |
| Lease Term | Standard lease for 24 months |
| Available | Mid, Oct, 2024 |
| Renewal Fee | 1 month |
| Agent Fee | 1 month + tax |
| Other Info | Key Replacement Fee : JPY20,000 Tax not included / Guarantor Company : TBC / No Key Money / Auto lock / Air-Con / Separated Toilet / Balcony / Internet Included / Penalty Fee for Early Cancellation / Flooring / Bathroom dryer / WIC |

| Building Information | | | |
|----------------------|--|-----------------------|-----|
| Completion | Jan, 2007 | Earthquake Resistance | New |
| Structure | RC, 15 floors above | | |
| Car Parking | N/A | | |
| Bicycle Parking | for 1 space JPY200 + tax / month | | |
| Music Instrument | - | Pet | N/A |
| Facilities | Motorcycle Parking (TBC) / Janitor / Delivery box / Elevator / High-rise | | |

| Remarks |
|------------------------------|
| Renters Insurance : Required |

*The actual Layout & Size may differ slightly from this floor plans & pictures.



HOUSEREP TOKYO INC.

ハウズレップトーキョー株式会社

#301, 1-4-15, Hiroo, Shibuya-ku, Tokyo 150-0012, Japan

+81 (0)3 6427 5860

inquiry@housserrep-tokyo.com

Transaction Type : Intermediate

Agent Fee : 1 month + tax

Website : www.housserrep-tokyo.com

