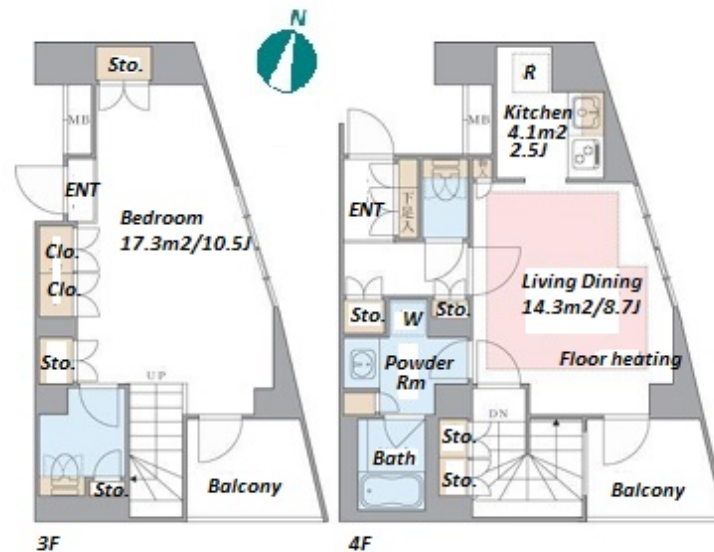


Property Name	BRILLIA IST SHINONOME CANAL COURT	Unit No.	TYPE	Access	Tatsumi Station on Yurakucho Line (11 min) Toyosu Station on Yurakucho Line (12 min)
		446	Apt.		
Address	1-9-22, Shinonome, Koto-Ku, Tokyo				



Lease Conditions		
LAYOUT	1 BR	
SIZE	69.08 m²/743.57 ft²	
RENT	JPY 199,000 / month	
Management Fee	JPY9,000/month	
Deposit	2 months	Key Money 1 month
Lease Term	Fixed term lease for 24 months	
Available	End, Sep, 2024	
Renewal Fee	-	
Agent Fee	1 month + tax	
Other Info	Key Replacement Fee : JPY25,000 Tax not included / Guarantor Company : TBC / Air-Con / Separated Toilet / Balcony / Loft/Maisonnette / Internet Included / Flooring / Floor Heating / 2 Toilets	

Building Information		
Completion	Mar, 2005	Earthquake Resistance New
Structure	RC, 14 floors above	
Car Parking	extra charge	
Bicycle Parking	for 1 space ( Included )	
Music Instrument	-	Pet N/A
Facilities	Motorcycle Parking (TBC) / Near Large Parks / Front desk / Delivery box / Elevator	

Remarks

\*The actual Layout & Size may differ slightly from this floor plans & pictures.



HOUSEREP TOKYO INC.

ハウスレップトーキョー株式会社

#301, 1-4-15, Hiroo, Shibuya-ku, Tokyo 150-0012, Japan

+81 (0)3 6427 5860

inquiry@housserrep-tokyo.com

Transaction Type : Intermediate

Agent Fee : 1 month + tax

Website : www.housserrep-tokyo.com

