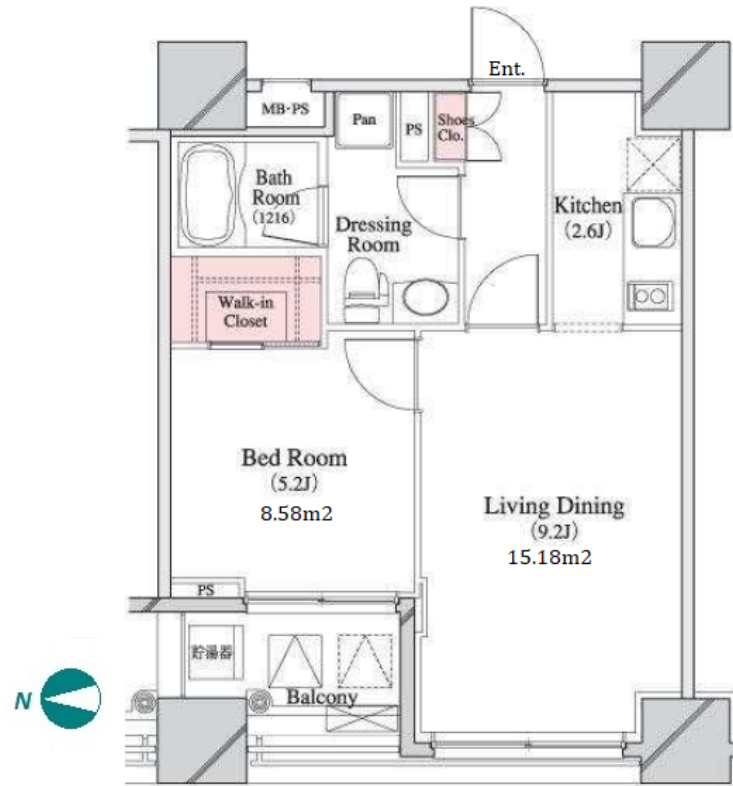


Property Name	PARK CUBE HATCHOBORI	Unit No.	TYPE	Access	Hacchoubori Station on JR Keiyo Line (1 min) Hacchoubori Station on Hibiya Line (1 min)
		201	Apt.		
Address	4-8-7, Hatchobori, Chuo-Ku, Tokyo				

## Mid-rise Apt. in Hachobori, near Tokyo Bay Area



Lease Conditions	
LAYOUT	1 BR
SIZE	40.66 m <sup>2</sup> /437.66 ft <sup>2</sup>
RENT	JPY 164,000 / month
Management Fee	JPY10,000/month
Deposit	2 months
Key Money	1 month
Lease Term	Standard lease for 24 months
Available	End, Sep, 2024
Renewal Fee	1 month
Agent Fee	1 month + tax
Other Info	Key Replacement Fee : JPY15,000 Tax not included / Guarantor Company : TBC / Auto lock / Air-Con / Separated Toilet / Balcony / Internet (Extra Charge) / Penalty Fee for Early Cancellation / Musical Instrument Negotiable / CS/CATV / Flooring / IH Stoves / Bathroom dryer / WIC

Building Information	
Completion	Mar, 2009
Earthquake Resistance	New
Structure	RC, 16 floors above and 2 basement floors
Car Parking	JPY40,000 + tax / month
Bicycle Parking	TBC
Music Instrument	Negotiable
Pet	Allowed
Facilities	Motorcycle Parking (TBC) / Within 20 min to Roppongi by train / Within 20 min to Tokyo station by car / Near Large Parks / Janitor / Delivery box / Elevator / Close to Station / High-rise

\*The actual Layout & Size may differ slightly from this floor plans & pictures.



# HOUSEREP TOKYO INC.

ハウスレップトーキョー株式会社

#301, 1-4-15, Hiroo, Shibuya-ku, Tokyo 150-0012, Japan

+81 (0)3 6427 5860

inquiry@housserrep-tokyo.com

Transaction Type : Intermediate

Agent Fee : 1 month + tax

Website : www.housserrep-tokyo.com



Remarks
Renters Insurance : Required / Pet:additional deposit ( 1 month ) / Pet : a small dog or a cat