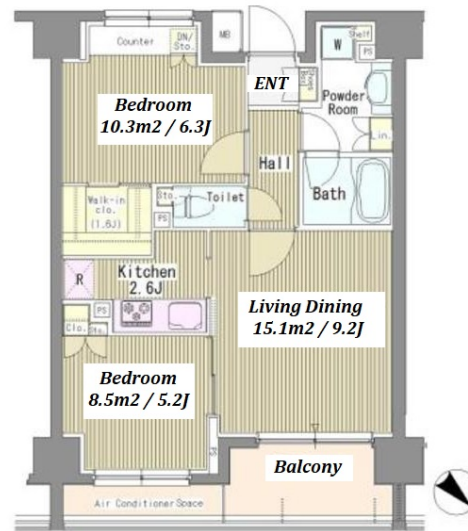
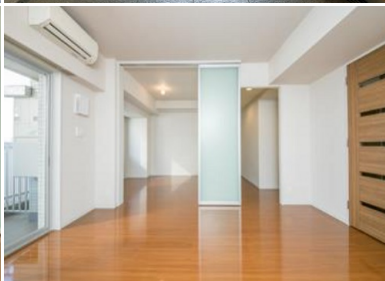
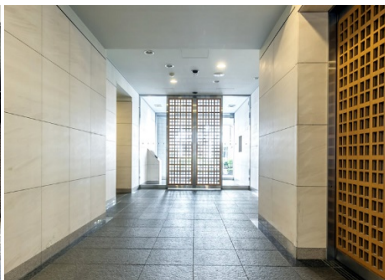
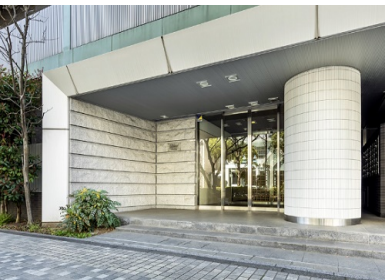


Property Name	LIBERTE TSUKISHIMA	Unit No.	TYPE	Access	Tsukishima Station on Yurakucho Line (6 min) Tsukishima Station on Oedo Line (6 min)
		306	Apt.		
Address	2-12-1, Tsukuda, Chuo-Ku, Tokyo				

## Mid-rise Apt. in Tsukishima



Lease Conditions	
LAYOUT	2 BR
SIZE	55.77 m²/600.3 ft²
RENT	JPY 215,000 / month
Management Fee	JPY15,000/month
Deposit	1 month
Key Money	2 months
Lease Term	Standard lease for 24 months
Available	Mid, Oct, 2024
Renewal Fee	1 month
Agent Fee	1 month + tax
Other Info	Key Replacement Fee : JPY20,000 Tax not included / Guarantor Company : TBC / Auto lock / Air-Con / Separated Toilet / Balcony / Internet (Extra Charge) / CS/CATV / Flooring / Floor Heating / Bathroom dryer / WIC

Building Information	
Completion	Feb, 2008
Earthquake Resistance	New
Structure	RC, 10 floors above and 1 basement floors
Car Parking	N/A
Bicycle Parking	for 1 space ( Included )
Music Instrument	-
Pet	-
Facilities	Motorcycle Parking (TBC) / Within 20 min to Roppongi by train / Near Large Parks / Janitor / Delivery box / Elevator

Remarks
Renters Insurance : Required

\*The actual Layout & Size may differ slightly from this floor plans & pictures.



HOUSEREP TOKYO INC.

ハウスレップトーキョー株式会社

#301, 1-4-15, Hiroo, Shibuya-ku, Tokyo 150-0012, Japan

+81 (0)3 6427 5860

inquiry@housserrep-tokyo.com

Transaction Type : Intermediate

Agent Fee : 1 month + tax

Website : www.housserrep-tokyo.com

