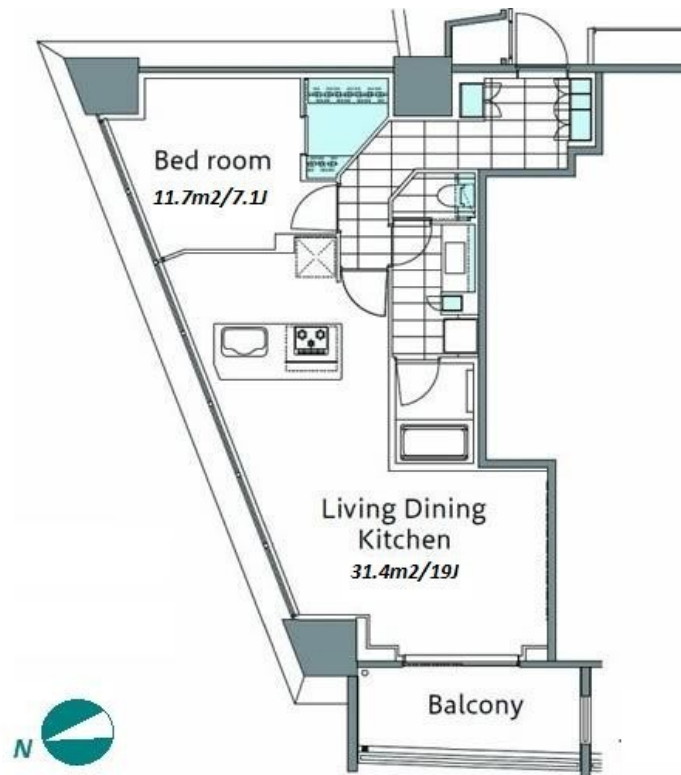


Property Name	COMFORIA SHINJUKU EAST SIDE TOWER	Unit No.	TYPE	Access	Higashishinnjuku Station on Fukutoshin Line (2 min) Higashishinnjuku Station on Oedo Line (2 min) Shinnjukusannchoume Station on Marunouchi Line (4 min)
		1201	Apt.		
Address	6-27-29, Shinjuku, Shinjuku-Ku, Tokyo				

Luxury Tower Residence w/ many facilities in East Side of Shinjuku



Lease Conditions		
LAYOUT	1 BR	
SIZE	62.86 m ² /676.61 ft ²	
RENT	JPY 409,000 / month	
Management Fee	-	
Deposit	2 months	Key Money -
Lease Term	Fixed term lease for 24 months	
Available	End, Aug, 2024	
Renewal Fee	-	
Agent Fee	1 month + tax	
Other Info	Key Replacement Fee : JPY30,000 Tax not included / No Key Money / Auto lock / Air-Con / Separated Toilet / Balcony / Penalty Fee for Early Cancellation / Flooring / Floor Heating / Dishwasher / Bathroom dryer	

Building Information			
Completion	Dec, 2011	Earthquake Resistance	New
Structure	RC, 32 floors above		
Car Parking	JPY43,000 ~ 50,000/ month		
Bicycle Parking	extra charge		
Music Instrument	-	Pet	Negotiable
Facilities	Motorcycle Parking (extra charge) / Gym (extra charge) / Within 20 min to Roppongi by train / Near Large Parks / pool / Front desk / Concierge / Delivery box / Elevator / Sky lounge / Security / Close to Station / High-rise		

Remarks

*The actual Layout & Size may differ slightly from this floor plans & pictures.



HOUSEREP TOKYO INC.

ハウスレップトーキョー株式会社

#301, 1-4-15, Hiroo, Shibuya-ku, Tokyo 150-0012, Japan

+81 (0)3 6427 5860

inquiry@housserrep-tokyo.com

Transaction Type : Intermediate

Agent Fee : 1 month + tax

Website : www.housserrep-tokyo.com

