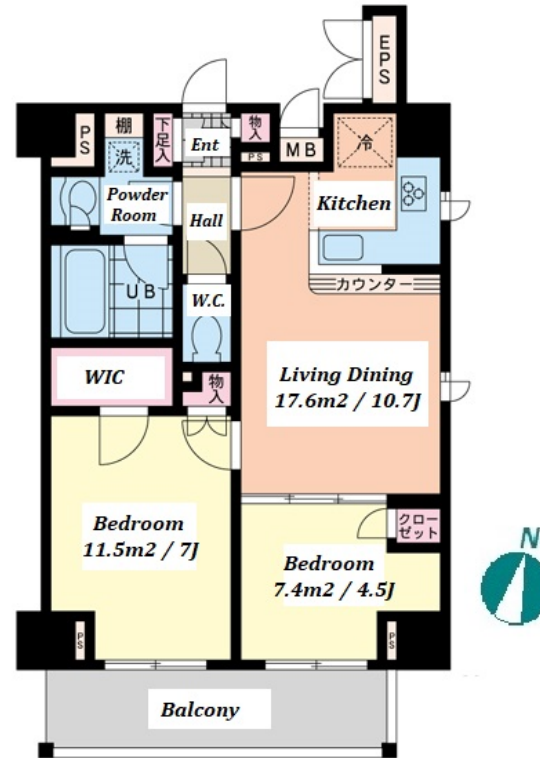
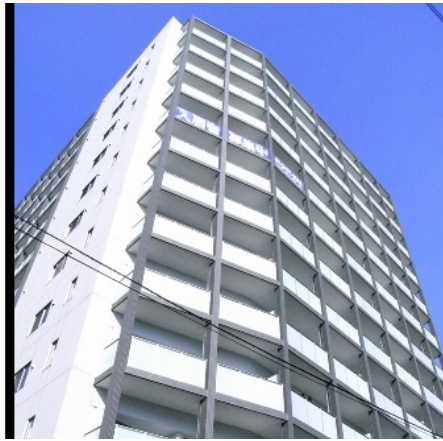


Property Name	ESTY MAISON AKABANE	Unit No.	TYPE	Access	Akabaneiwabuchi Station on Namboku Line (5 min) Akabane Station on JR Saikyo Line (7 min) Akabane Station on JR Keihin Tohoku Line (7 min)
		901	Apt.		
Address	2-39-5, Akabane, Kita-Ku, Tokyo				



Lease Conditions

LAYOUT	2 BR		
SIZE	50.8 m²/546.8 ft²		
RENT	JPY 192,000 / month		
Management Fee	JPY10,000/month		
Deposit	2 months	Key Money	1 month
Lease Term	Standard lease for 24 months		
Available	Mid, Sep, 2024		
Renewal Fee	1 month		
Agent Fee	1 month + tax		
Other Info	Key Replacement Fee : JPY30,000 Tax not included / Guarantor Company : TBC / Auto lock / Air-Con / Separated Toilet / Balcony / Internet (Extra Charge) / Penalty Fee for Early Cancellation / CS/CATV / Flooring / Bathroom dryer / WIC / Corner Unit		

Building Information

Completion	Nov, 2009	Earthquake Resistance	New
Structure	SRC, 13 floors above		
Car Parking	JPY28,000 + tax / month		
Bicycle Parking	JPY500 + tax / month		
Music Instrument	-	Pet	Allowed
Facilities	Janitor / 24h Garbage Drop-off		

*The actual Layout & Size may differ slightly from this floor plans & pictures.



HOUSEREP TOKYO INC.

ハウズレップトーキョー株式会社

#301, 1-4-15, Hiroo, Shibuya-ku, Tokyo 150-0012, Japan

+81 (0)3 6427 5860 inquiry@housserep-tokyo.com

Transaction Type : Intermediate

Agent Fee : 1 month + tax

Website : www.housserep-tokyo.com



Remarks

Renters Insurance : Required / Tenant support fee:
JPY.15,000+tax/2years / Parking : 1 month for deposit / Bicycle parking : 500yen+tax for a sticker / Pet:additional deposit (1 month) / Pet : 1-7th floor does not allow pets