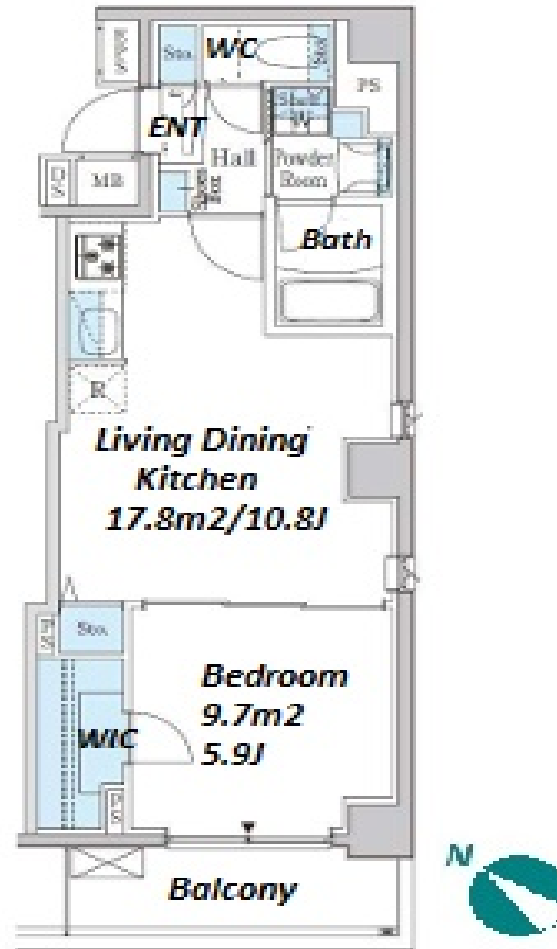


Property Name	AVELUNA TSUKISHIMA	Unit No.	TYPE	Access	Tsukishima Station on Yurakucho Line (4 min) Tsukishima Station on Oedo Line (4 min)
		903	Apt.		
Address	3-16-1, Tsukishima, Chuo-Ku, Tokyo				

Modern Mid-rise Apt. in Tsukishima



*The actual Layout & Size may differ slightly from this floor plans & pictures.

Lease Conditions	
LAYOUT	1 BR
SIZE	40.51 m²/436.04 ft²
RENT	JPY 179,000 / month
Management Fee	JPY15,000/month
Deposit	2 months
Key Money	-
Lease Term	Standard lease for 24 months
Available	Early, Aug, 2024
Renewal Fee	1 month
Agent Fee	1 month + tax
Other Info	Key Replacement Fee : JPY20,000 Tax not included / Guarantor Company : TBC / No Key Money / Auto lock / Air-Con / Separated Toilet / Balcony / Internet (Extra Charge) / Penalty Fee for Early Cancellation / Flooring / Bathroom dryer / WIC

Building Information			
Completion	Jul, 2022	Earthquake Resistance	New
Structure	RC, 9 floors above		
Car Parking	N/A		
Bicycle Parking	for 1 space (Included)		
Music Instrument	-	Pet	N/A
Facilities	Delivery box / Elevator / Newly-built (~1 y/o)		



HOUSEREP TOKYO INC.

ハウスレップトーキョー株式会社

#301, 1-4-15, Hiroo, Shibuya-ku, Tokyo 150-0012, Japan

+81 (0)3 6427 5860 inquiry@housserrep-tokyo.com

Transaction Type : Intermediate

Agent Fee : 1 month + tax

Website : www.housserrep-tokyo.com



Remarks
Renters Insurance : Required