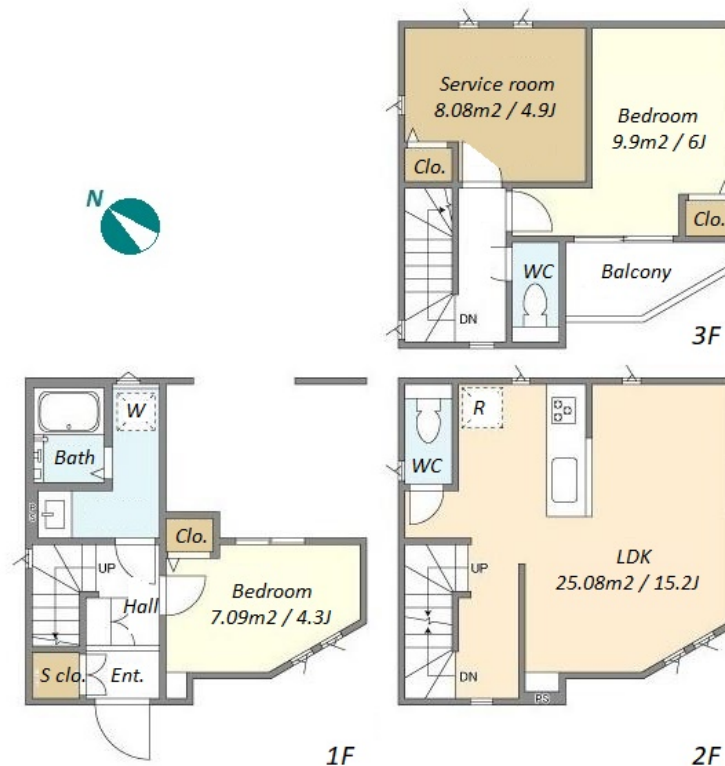
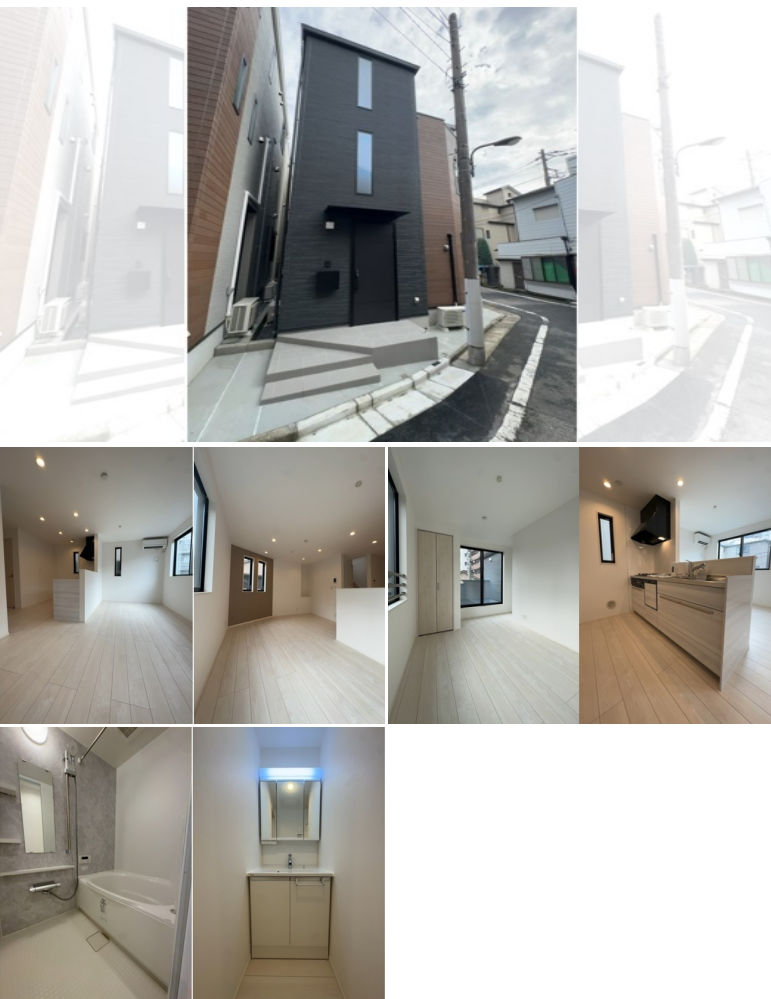


Property Name	KOLET OTSUKA #03	Unit No.	TYPE	Access	Kitaikebukuro Station on (9 min) Otsuka Station on JR Yamanote Line (13 min) Ikebukuro Station on JR Yamanote Line (17 min)
			House		
Address	1-27-1, Kamiikebukuro, Toshima-Ku, Tokyo				

3 Story House near "Otsuka" stn. w/ Smart Home Functions



Lease Conditions	
LAYOUT	2 BR+S
SIZE	74.73 m ² /804.38 ft ²
RENT	JPY 306,000 / month
Management Fee	-
Deposit	1 month
Key Money	1 month
Lease Term	Standard lease for 24 months
Available	Now
Renewal Fee	1 month
Agent Fee	1 month + tax
Other Info	Guarantor Company : TBC / Air-Con / Separated Toilet / Balcony / Musical Instrument Negotiable / Flooring / Bathroom dryer / 2 Toilets

Building Information			
Completion	Jul, 2023	Earthquake Resistance	New
Structure	Wooden, 3 floors above		
Car Parking	(Included)		
Bicycle Parking	-		
Music Instrument	Negotiable	Pet	Negotiable
Facilities	House / Delivery box / Newly-built (~7 y/o)		

Remarks
Renters Insurance : Required

*The actual Layout & Size may differ slightly from this floor plans & pictures.



HOUSEREP TOKYO INC.

ハウスレップトーキョー株式会社

#301, 1-4-15, Hiroo, Shibuya-ku, Tokyo 150-0012, Japan

+81 (0)3 6427 5860 inquiry@housserrep-tokyo.com

Transaction Type : Intermediate

Agent Fee : 1 month + tax

Website : www.housserrep-tokyo.com

