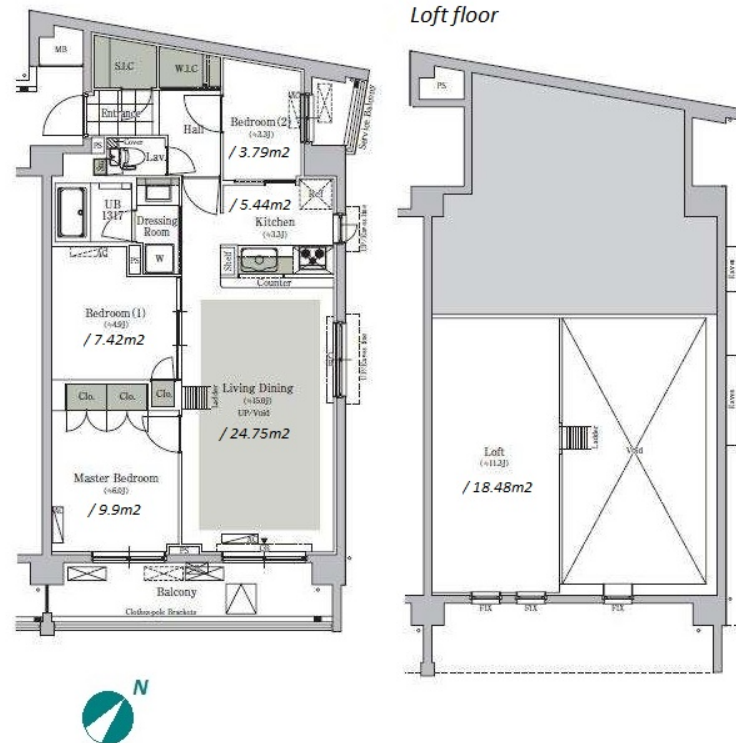
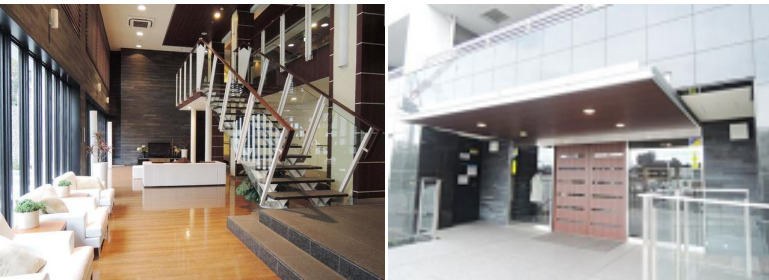


Property Name	PARK CUBE NISHIGAHARA STAGE	Unit No.	TYPE	Access	Nishisugamo Station on Mita Line (9 min) Nishigahara Station on Namboku Line (11 min) Sugamo Station on JR Yamanote Line (16 min)
		526	Apt.		
Address	4-51-35, Nishigahara, Kita-Ku, Tokyo				

Residential Mid-rise Apt. in Nishigahara



Lease Conditions	
LAYOUT	3 BR
SIZE	69.74 m²/750.67 ft²
RENT	JPY 254,000 / month
Management Fee	JPY15,000/month
Deposit	2 months
Key Money	1 month
Lease Term	Fixed term lease for 24 months
Available	End, Aug, 2024
Renewal Fee	-
Agent Fee	1 month + tax
Other Info	Key Replacement Fee : JPY15,000 Tax not included / Guarantor Company : TBC / Auto lock / Air-Con / Separated Toilet / Balcony / Loft/Maisonette / Internet Included / Musical Instrument Negotiable / CS/CATV / Flooring / Floor Heating / Bathroom dryer / WIC / Corner Unit

Building Information			
Completion	Dec, 2009	Earthquake Resistance	New
Structure	RC, 14 floors above and 2 basement floors		
Car Parking	JPY30,000 + tax / month		
Bicycle Parking	for 2 spaces (Included)		
Music Instrument	Negotiable	Pet	Allowed
Facilities	Motorcycle Parking (TBC) / Near Large Parks / Front desk / Concierge / Delivery box / Elevator		

*The actual Layout & Size may differ slightly from this floor plans & pictures.



HOUSEREP TOKYO INC.

ハウスレップトーキョー株式会社

#301, 1-4-15, Hiroo, Shibuya-ku, Tokyo 150-0012, Japan

+81 (0)3 6427 5860

inquiry@housserrep-tokyo.com

Transaction Type : Intermediate

Agent Fee : 1 month + tax

Website : www.housserrep-tokyo.com



Remarks
Renters Insurance : Required / Town association fee: JPY.3,000/2years / Bicycle parking : Registration fee: 2,200yen / Pet:additional deposit (1 month) / Pet : a small dog or up to two cats