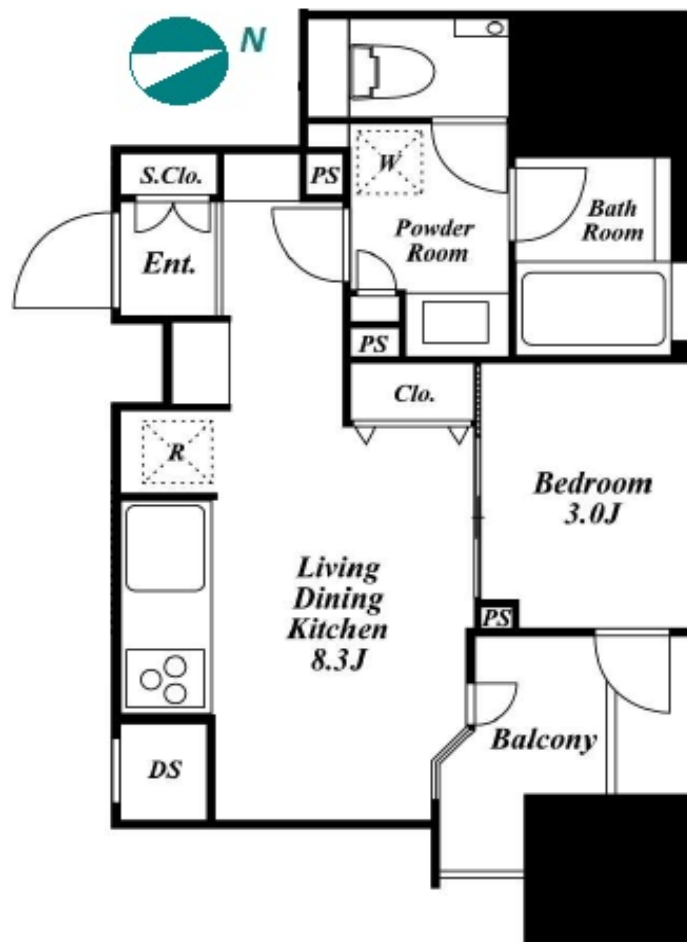


Property Name	ASAHI MANSION GOTANDA	Unit No.	TYPE	Access	Gotanda Station on JR Yamanote Line (5 min) Gotanda Station on Toei Asakusa Line (5 min) Gotanda Station on Tokyu Ikegami Line (5 min)
		1402	Apt.		
Address	2-28-4, Nishigotanda, Shinagawa-Ku, Tokyo				

High-rise Apt. in Gotanda, easy access to Ebisu, Shibuya, Shinjuku



*The actual Layout & Size may differ slightly from this floor plans & pictures.

Lease Conditions	
LAYOUT	1 BR
SIZE	30.99 m ² /333.57 ft ²
RENT	JPY 145,000 / month
Management Fee	JPY8,000/month
Deposit	1 month
Key Money	-
Lease Term	Fixed term lease for 36 months
Available	End, Aug, 2024
Renewal Fee	-
Agent Fee	1 month + tax
Other Info	Guarantor Company : TBC / No Key Money / Auto lock / Air-Con / Separated Toilet / Balcony / Internet (Extra Charge) / Penalty Fee for Early Cancellation / Musical Instrument Negotiable / Flooring / Bathroom dryer / Corner Unit

Building Information			
Completion	Apr, 2013	Earthquake Resistance	New
Structure	RC, 18 floors above		
Car Parking	N/A		
Bicycle Parking	TBC		
Music Instrument	Negotiable	Pet	N/A
Facilities	Within 20 min to Roppongi by train / Within 20 min to Tokyo station by car / Near Large Parks / Delivery box / Elevator / High-rise		

Remarks
Renters Insurance : Required



HOUSEREP TOKYO INC.

ハウズレップトーキョー株式会社

#301, 1-4-15, Hiroo, Shibuya-ku, Tokyo 150-0012, Japan

+81 (0)3 6427 5860

inquiry@housserrep-tokyo.com

Transaction Type : Intermediate

Agent Fee : 1 month + tax

Website : www.housserrep-tokyo.com

