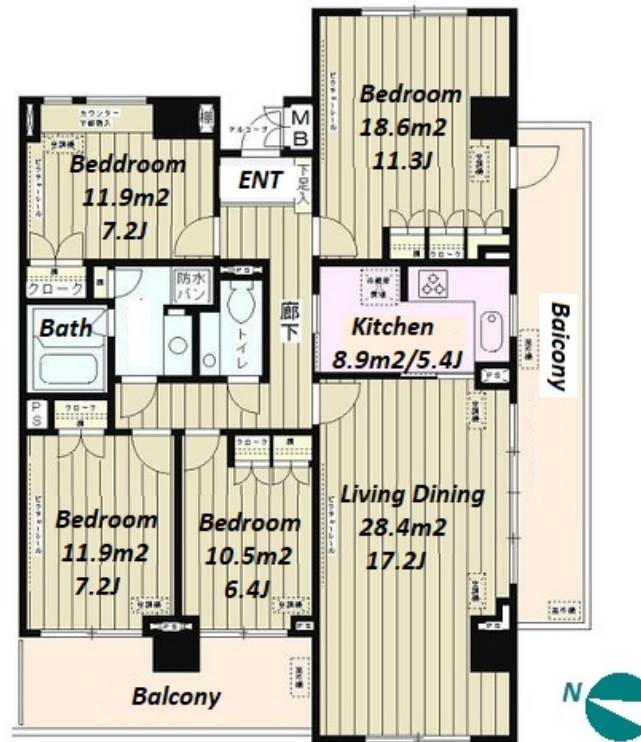
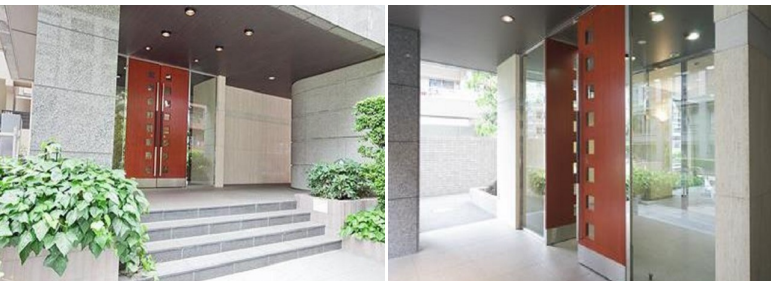


Property Name	MARSH FIELD YONBANCHO	Unit No.	TYPE	Access	Ichigaya Station on JR Chuo Line Rapid Service (3 min) Hanzoumonn Station on Hanzomon Line (12 min)
		705	Apt.		
Address	6-11, Yombancho, Chiyoda-Ku, Tokyo				



Lease Conditions	
LAYOUT	4 BR
SIZE	117.58 m²/1265.62 ft²
RENT	JPY 500,000 / month
Management Fee	JPY20,000/month
Deposit	2 months
Key Money	1 month
Lease Term	Standard lease for 24 months
Available	End, Aug, 2024
Renewal Fee	1 month
Agent Fee	1 month + tax
Other Info	Key Replacement Fee : JPY20,000 Tax not included / Guarantor Company : TBC / Auto lock / Air-Con / Separated Toilet / Balcony / Penalty Fee for Early Cancellation / Musical Instrument Negotiable / Flooring / Bathroom dryer

Building Information	
Completion	May, 1998
Earthquake Resistance	New
Structure	SRC, 12 floors above and 1 basement floors
Car Parking	JPY42,000 + tax / month
Bicycle Parking	for 1 space ( Included )
Music Instrument	Negotiable
Pet	-
Facilities	Janitor / Delivery box / Close to Station

Remarks
Renters Insurance : Required

\*The actual Layout & Size may differ slightly from this floor plans & pictures.



HOUSEREP TOKYO INC.

ハウスレップトーキョー株式会社

#301, 1-4-15, Hiroo, Shibuya-ku, Tokyo 150-0012, Japan

+81 (0)3 6427 5860

inquiry@housserep-tokyo.com

Transaction Type : Intermediate

Agent Fee : 1 month + tax

Website : www.housserep-tokyo.com

