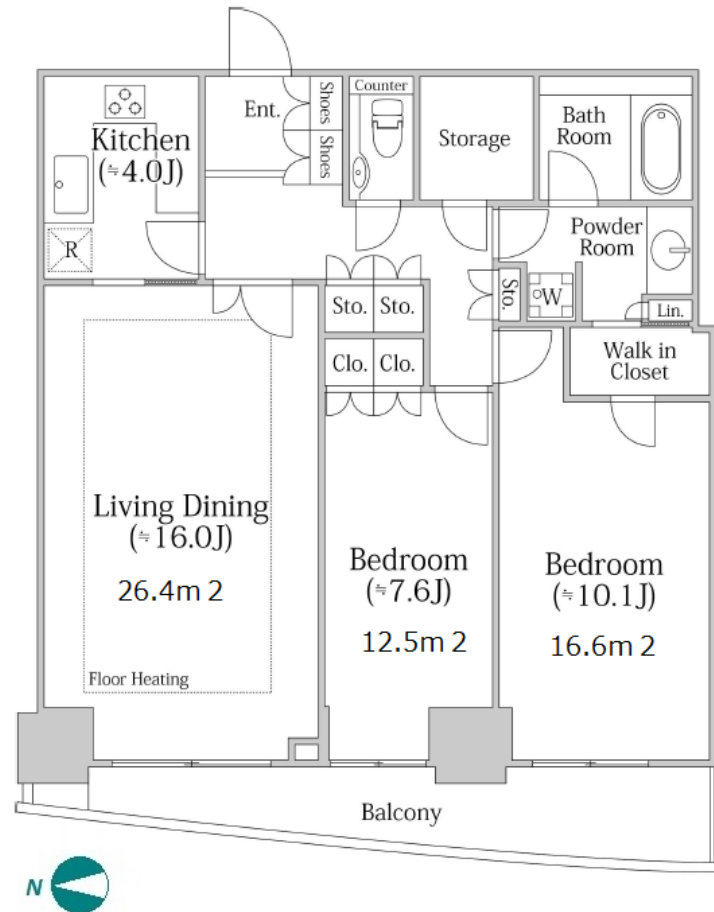


Property Name	KAWADACHO GARDEN	Unit No.	TYPE	Access	Akebonobashi Station on Toei Shinjuku Line (4 min) Wakamatsukawada Station on Oedo Line (6 min) Yotsuyasannchoume Station on Marunouchi Line (15 min)
		3810	Apt.		
Address	3-51, Kawadacho, Shinjuku-Ku, Tokyo				

Stylish High Rise Apartment in Kawadacho, Shinjuku



*The actual Layout & Size may differ slightly from this floor plans & pictures.

Lease Conditions	
LAYOUT	2 BR
SIZE	88.97 m ² /957.66 ft ²
RENT	JPY 428,600 / month
Management Fee	JPY10,000/month
Deposit	1 month
Key Money	1 month
Lease Term	Standard lease for 24 months
Available	Mid, Sep, 2024
Renewal Fee	1 month
Agent Fee	1 month + tax
Other Info	Key Replacement Fee : JPY20,000 Tax not included / Guarantor Company : TBC / Auto lock / Air-Con / Separated Toilet / Balcony / Internet (Extra Charge) / Penalty Fee for Early Cancellation / Nice Views / CS/CATV / Flooring / Floor Heating / Bathroom dryer / WIC

Building Information	
Completion	Mar, 2003
Earthquake Resistance	New
Structure	RC, 41 floors above and 2 basement floors
Car Parking	JPY41,580 ~ 50,820 + tax / month
Bicycle Parking	TBC
Music Instrument	-
Pet	-
Facilities	Motorcycle Parking (JPY5,000 + tax / month) / Gym (extra charge) / Near Large Parks / Janitor / Delivery box / Elevator / High-rise

Remarks



HOUSEREP TOKYO INC.

ハウスレップトーキョー株式会社

#301, 1-4-15, Hiroo, Shibuya-ku, Tokyo 150-0012, Japan

+81 (0)3 6427 5860

inquiry@housserep-tokyo.com

Transaction Type : Intermediate

Agent Fee : 1 month + tax

Website : www.housserep-tokyo.com

