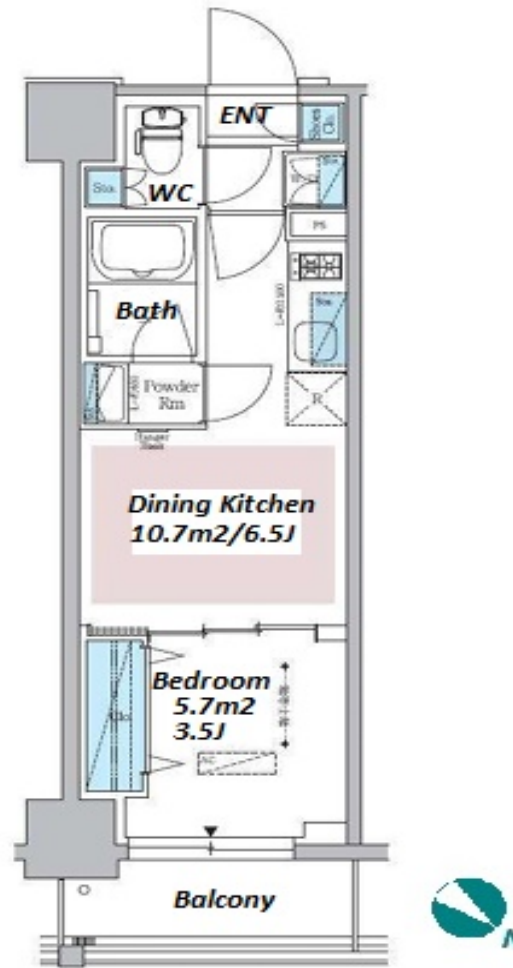


Property Name	URBANEX NIHONBASHI YOKOYAMACHO	Unit No.	TYPE	Access	Bakurochou Station on JR Sobu Line (2 min) Bakurochou Station on Toei Asakusa Line (2 min) Asakusabashi Station on JR Chuo-Sobu Line (6 min)
		1203	Apt.		
Address	7-13, Nihombashiyokoyamacho, Chuo-Ku, Tokyo				

Stylish Mid Rise Apt. in Nihonbashi, near "Bakurocho" stn.



*The actual Layout & Size may differ slightly from this floor plans & pictures.

Lease Conditions		
LAYOUT	1 BR	
SIZE	25.08 m ² /269.95 ft ²	
RENT	JPY 154,000 / month	
Management Fee	JPY15,000/month	
Deposit	2 months	Key Money -
Lease Term	Standard lease for 24 months	
Available	End, Aug, 2024	
Renewal Fee	1 month	
Agent Fee	1 month + tax	
Other Info	Key Replacement Fee : JPY20,000 Tax not included / Guarantor Company : TBC / No Key Money / Auto lock / Air-Con / Separated Toilet / Balcony / Internet Included / Penalty Fee for Early Cancellation / Flooring / Floor Heating / Bathroom dryer	

Building Information		
Completion	Feb, 2024	Earthquake Resistance New
Structure	RC, 12 floors above	
Car Parking	TBC	
Bicycle Parking	for 1 space JPY500 + tax / month	
Music Instrument	-	Pet N/A
Facilities	Within 20 min to Tokyo station by car / Janitor / Delivery box / Elevator / Close to Station / 24h Garbage Drop-off / Newly-built (~1 y/o)	



HOUSEREP TOKYO INC.

ハウスレップトーキョー株式会社

#301, 1-4-15, Hiroo, Shibuya-ku, Tokyo 150-0012, Japan

+81 (0)3 6427 5860 inquiry@housserrep-tokyo.com

Transaction Type : Intermediate

Agent Fee : 1 month + tax

Website : www.housserrep-tokyo.com



Remarks
Renters Insurance : Required