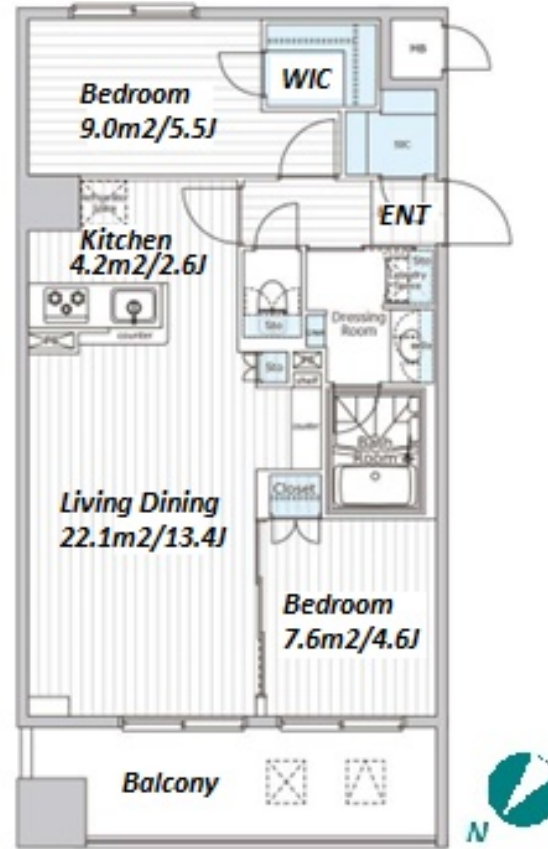


Property Name	VIERRA COURT NIHONBASHI HISAMATSU CHO	Unit No.	TYPE	Access	Ninngyouchou Station on Hibiya Line (5 min) Ninngyouchou Station on Hanzomon Line (5 min) Higashinohonbashi Station on Toei Asakusa Line (5 min)
	Address	6-2, Nihombashihisamatsucho, Chuo-Ku, Tokyo	901		

Modern Mid Rise Apt. in Nihonbashi, near "Ningyocho" stn.



Lease Conditions		
LAYOUT	2 BR	
SIZE	58.85 m²/633.45 ft²	
RENT	JPY 357,000 / month	
Management Fee	JPY20,000/month	
Deposit	2 months	Key Money -
Lease Term	Standard lease for 24 months	
Available	Now	
Renewal Fee	1 month	
Agent Fee	1 month + tax	
Other Info	Guarantor Company : TBC / No Key Money / Auto lock / Air-Con / Separated Toilet / Balcony / Internet Included / Penalty Fee for Early Cancellation / Flooring / Bathroom dryer / WIC	

Building Information		
Completion	Mar, 2024	Earthquake Resistance New
Structure	RC, 11 floors above	
Car Parking	extra charge	
Bicycle Parking	for 1 space ( Included )	
Music Instrument	-	Pet Allowed
Facilities	Within 20 min to Tokyo station by car / Janitor / Delivery box / Elevator / Close to Station / 24h Garbage Drop-off / Newly-built (~1 y/o)	

\*The actual Layout & Size may differ slightly from this floor plans & pictures.



**HOUSEREP TOKYO INC.**  
ハウスレップトキョー株式会社

#301, 1-4-15, Hiroo, Shibuya-ku, Tokyo 150-0012, Japan  
+81 (0)3 6427 5860 inquiry@housserrep-tokyo.com

Transaction Type : Intermediate  
Agent Fee : 1 month + tax

Website : www.housserrep-tokyo.com



Remarks
Renters Insurance : Required / Pet:additional deposit ( 1 month ) / Pet : a small dog or a cat