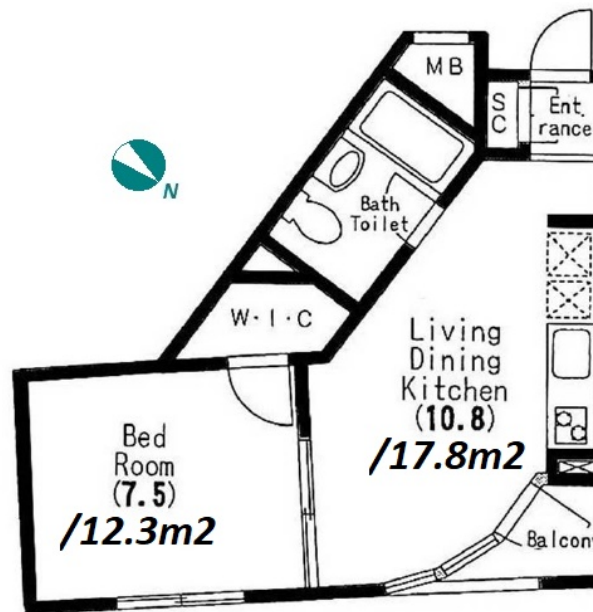
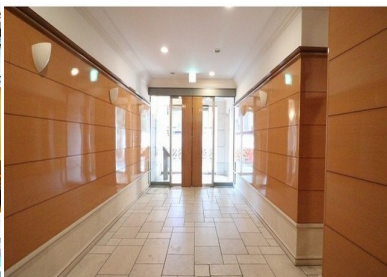
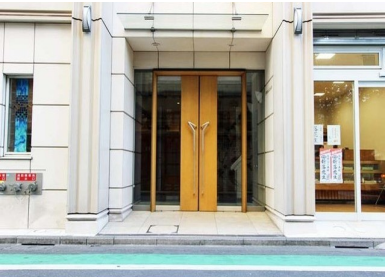


Property Name	DOUGENZAKA SQUARE	Unit No.	TYPE	Access	Shibuya Station on Ginza Line (5 min) Shibuya Station on JR Yamanote Line (8 min)
		706	Apt.		
Address	5-18, Maruyamacho, Shibuya-Ku, Tokyo				

Mid Rise Designer's Apt. near Shibuya stn. & Shinsen stn.



Lease Conditions	
LAYOUT	-
SIZE	39.33 m <sup>2</sup> /423.34 ft <sup>2</sup>
RENT	JPY 202,000 / month
Management Fee	JPY12,000/month
Deposit	2 months
Key Money	-
Lease Term	Standard lease for 24 months
Available	Now
Renewal Fee	1 month
Agent Fee	1 month + tax
Other Info	Key Replacement Fee : JPY30,000 Tax not included / Guarantor Company : TBC / Auto lock / Air-Con / Separated Toilet / Balcony / Penalty Fee for Early Cancellation / Flooring / IH Stoves / Bathroom dryer / WIC

Building Information			
Completion	Oct, 2004	Earthquake Resistance	New
Structure	SRC, 9 floors above		
Car Parking	-		
Bicycle Parking	-		
Music Instrument	-	Pet	-
Facilities	Within 20 min to Roppongi by train / Designer's / Delivery box / Elevator / Close to Station / 24h Garbage Drop-off		

Remarks
Renters Insurance : Required

\*The actual Layout & Size may differ slightly from this floor plans & pictures.



HOUSEREP TOKYO INC.

ハウスレップトーキョー株式会社

#301, 1-4-15, Hiroo, Shibuya-ku, Tokyo 150-0012, Japan

+81 (0)3 6427 5860 inquiry@housserep-tokyo.com

Transaction Type : Intermediate

Agent Fee : 1 month + tax

Website : www.housserep-tokyo.com

