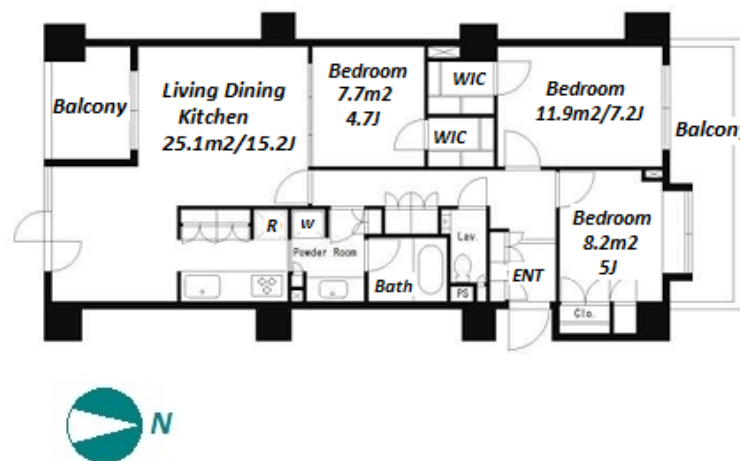


Property Name	PARK SIDE WINGS	Unit No.	TYPE	Access	Tsukishima Station on Yurakucho Line (6 min) Hacchoubori Station on Hibiya Line (11 min)
		1203	Apt.		
Address	1-11-3, Tsukuda, Chuo-Ku, Tokyo				

"Renovated" Vintage Apartment in Tsukishima area



Lease Conditions	
LAYOUT	3 BR
SIZE	84.35 m²/907.93 ft²
RENT	JPY 430,000 / month
Management Fee	-
Deposit	2 months
Key Money	1 month
Lease Term	Standard lease for 24 months
Available	Now
Renewal Fee	1 month
Agent Fee	1 month + tax
Other Info	Key Replacement Fee : JPY15,000 Tax not included / Guarantor Company : TBC / Auto lock / Air-Con / Separated Toilet / Balcony / Internet Included / Penalty Fee for Early Cancellation / Musical Instrument Negotiable / Flooring / IH Stoves / Dishwasher / Oven / Bathroom dryer / WIC

Building Information	
Completion	May, 1988
Earthquake Resistance	New
Structure	SRC, 14 floors above
Car Parking	extra charge
Bicycle Parking	for 2 spaces extra charge
Music Instrument	Negotiable
Pet	-
Facilities	Motorcycle Parking (TBC) / Front desk / Janitor / Delivery box / Elevator

*The actual Layout & Size may differ slightly from this floor plans & pictures.



HOUSEREP TOKYO INC.

ハウスレップトキョー株式会社

#301, 1-4-15, Hiroo, Shibuya-ku, Tokyo 150-0012, Japan

+81 (0)3 6427 5860

inquiry@housserep-tokyo.com

Transaction Type : Intermediate

Agent Fee : 1 month + tax

Website : www.housserep-tokyo.com



Remarks
Renters Insurance : Required