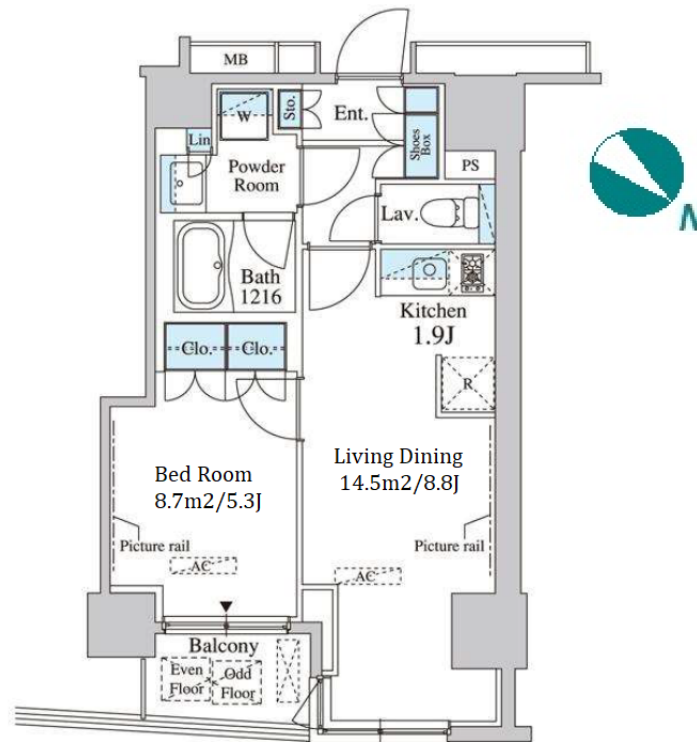


Property Name	SERESA NIHONBASHI HORIDOMECHO	Unit No.	703	TYPE	Apt.	Access	Ninngyouchou Station on Hibiya Line (2 min) Shinnihonbashi Station on JR Sobu Line (10 min)
	Address	1-8-13, Nihombashihoridomecho, Chuo-Ku, Tokyo					

Middle Rise Apt. in Horidomecho, Ningyocho Area



Lease Conditions		
LAYOUT	1 BR	
SIZE	40.04 m ² /430.98 ft ²	
RENT	JPY 162,000 / month	
Management Fee	JPY 15,000/month	
Deposit	2 months	Key Money 1 month
Lease Term	Standard lease for 24 months	
Available	End, Aug, 2024	
Renewal Fee	1 month	
Agent Fee	1 month + tax	
Other Info	Key Replacement Fee : JPY20,000 Tax not included / Guarantor Company : TBC / Auto lock / Air-Con / Separated Toilet / Balcony / Internet (Extra Charge) / Penalty Fee for Early Cancellation / CS/CATV / Flooring / Bathroom dryer	

Building Information		
Completion	Nov, 2012	Earthquake Resistance New
Structure	RC, 14 floors above	
Car Parking	JPY35,000 + tax / month	
Bicycle Parking	for 1 space (Included)	
Music Instrument	-	Pet -
Facilities	Motorcycle Parking (TBC) / Within 20 min to Tokyo station by car / Near Large Parks / Janitor / Delivery box / Elevator / Security / Close to Station	

Remarks
Renters Insurance : Required

*The actual Layout & Size may differ slightly from this floor plans & pictures.



HOUSEREP TOKYO INC.

ハウスレップトーキョー株式会社

#301, 1-4-15, Hiroo, Shibuya-ku, Tokyo 150-0012, Japan

+81 (0)3 6427 5860

inquiry@housserrep-tokyo.com

Transaction Type : Intermediate

Agent Fee : 1 month + tax

Website : www.housserrep-tokyo.com

