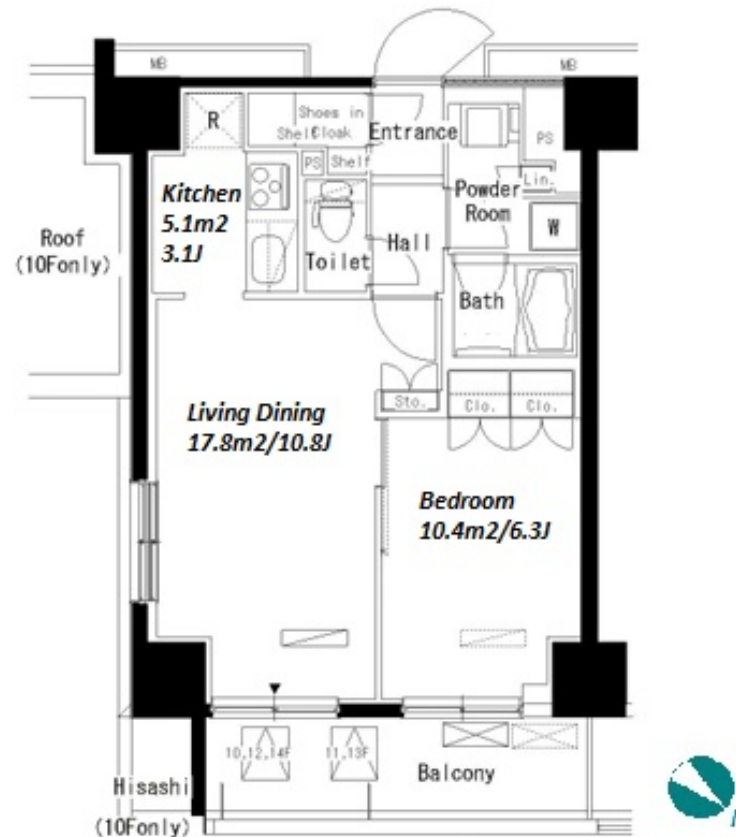


| | | | | | |
|---------------|--------------------------------------|----------|------|--------|--|
| Property Name | PARK AXIS ITABASHIHONCHO NIBANKAN | Unit No. | TYPE | Access | Motohasunuma Station on Mita Line (6 min) Itabashihonnchou Station on Mita Line (7 min) |
| | | 1007 | Apt. | | |
| Address | 74-1, Shimizucho, Itabashi-Ku, Tokyo | | | | |

High rise apartment in Itabashi area



| Lease Conditions | | |
|------------------|--|-------------------|
| LAYOUT | 1 BR | |
| SIZE | 46.98 m²/505.68 ft² | |
| RENT | JPY 159,000 / month | |
| Management Fee | JPY10,000/month | |
| Deposit | 2 months | Key Money 1 month |
| Lease Term | Standard lease for 24 months | |
| Available | End, Aug, 2024 | |
| Renewal Fee | 1 month | |
| Agent Fee | 1 month + tax | |
| Other Info | Key Replacement Fee : JPY15,000 Tax not included / Guarantor Company : TBC / Auto lock / Air-Con / Separated Toilet / Balcony / Penalty Fee for Early Cancellation / Musical Instrument Negotiable / CS/CATV / Flooring / Bathroom dryer | |

| Building Information | | |
|----------------------|---|---------------------------|
| Completion | Jan, 2010 | Earthquake Resistance New |
| Structure | RC, 14 floors above | |
| Car Parking | JPY22,000 ~ 25,000 + tax / month | |
| Bicycle Parking | for 1 space (Included) | |
| Music Instrument | Negotiable | Pet Allowed |
| Facilities | Motorcycle Parking (JPY3,000 + tax / month) / Delivery box / Elevator | |

| Remarks |
|--|
| Renters Insurance : Required / Bicycle parking : registration fee : JPY2,000+tax / Pet:additional deposit (1 month) / Pet : a small dog or a cat |

*The actual Layout & Size may differ slightly from this floor plans & pictures.



HOUSEREP TOKYO INC.

ハウスレップトーキョー株式会社

#301, 1-4-15, Hiroo, Shibuya-ku, Tokyo 150-0012, Japan

+81 (0)3 6427 5860

inquiry@housserrep-tokyo.com

Transaction Type : Intermediate

Agent Fee : 1 month + tax

Website : www.housserrep-tokyo.com

