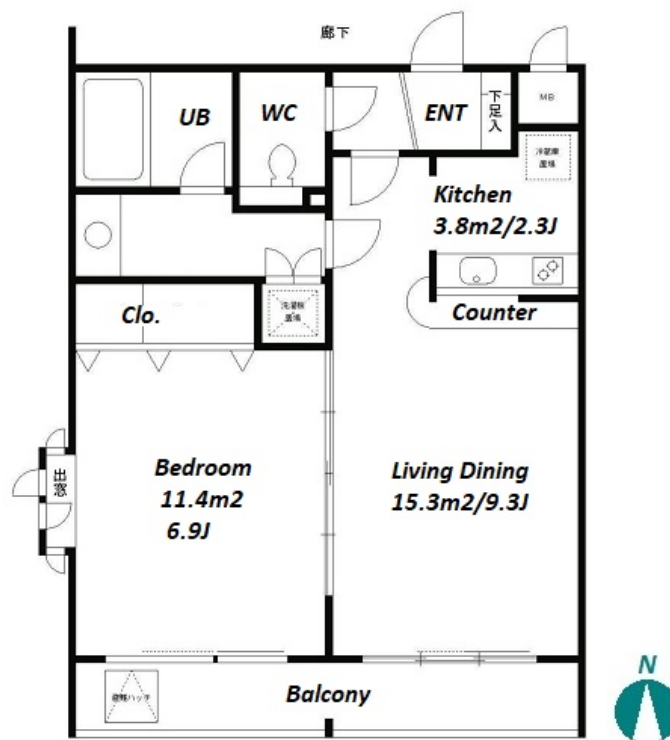
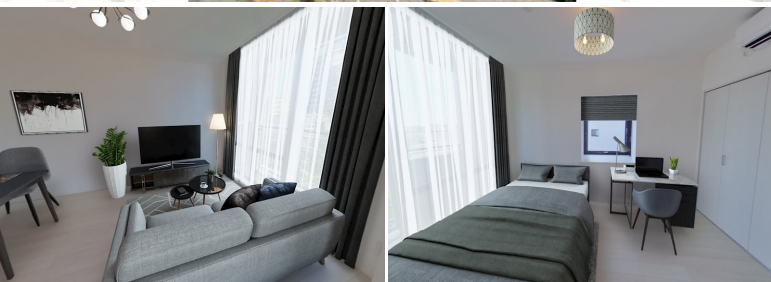


Property Name	RESIDIA SASAZUKA	Unit No.	TYPE	Access	Daitabashi Station on Keio Line (6 min) Sasaduka Station on Keio Line (8 min)
		605	Apt.		
Address	1-1-1, Honan, Suginami-Ku, Tokyo				

Low Rise Apt. in Suginami, near "Sasazuka" & "Daitabashi" stn.



## Lease Conditions

LAYOUT	1 BR		
SIZE	42.3 m²/455.31 ft²		
RENT	JPY 164,000 / month		
Management Fee	JPY15,000/month		
Deposit	2 months	Key Money	1 month
Lease Term	Standard lease for 24 months		
Available	Now		
Renewal Fee	1 month		
Agent Fee	1 month + tax		
Other Info	Key Replacement Fee : JPY17,000 Tax not included / Guarantor Company : TBC / Auto lock / Renovated / Air-Con / Separated Toilet / Balcony / Penalty Fee for Early Cancellation / Flooring / Bathroom dryer / Corner Unit		

## Building Information

Completion	Mar, 2000	Earthquake Resistance	New
Structure	RC, 6 floors above		
Car Parking	-		
Bicycle Parking	-		
Music Instrument	-	Pet	-

Facilities: Delivery box / Elevator / Security

## Remarks

Renters Insurance : Required / Tenant support fee: 11,000yen/2years

\*The actual Layout & Size may differ slightly from this floor plans & pictures.



HOUSEREP TOKYO INC.

ハウズレップトーキョー株式会社

#301, 1-4-15, Hiroo, Shibuya-ku, Tokyo 150-0012, Japan

+81 (0)3 6427 5860 inquiry@housserrep-tokyo.com

Transaction Type : Intermediate

Agent Fee : 1 month + tax

Website : www.housserrep-tokyo.com

