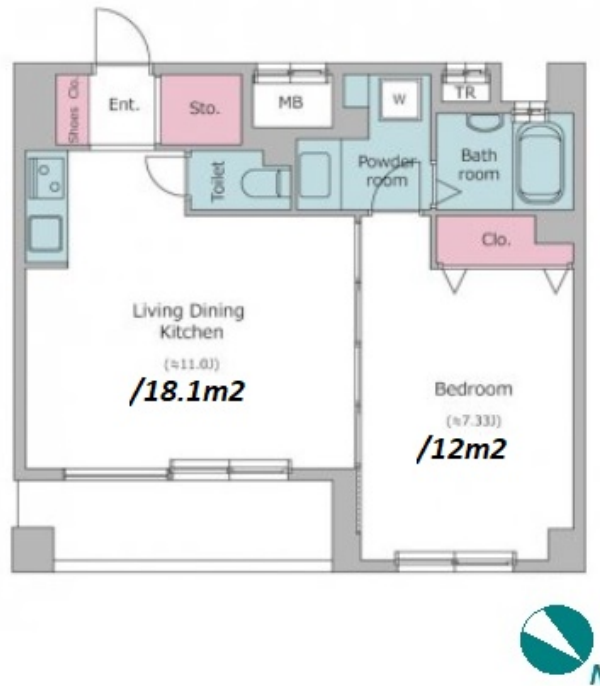


Property Name	RESIDIA MITSUKOSHIMAE	Unit No.	TYPE	Access	Shinnihonbashi Station on JR Sobu Line (2 min) Kodenmachou Station on Hibiya Line (4 min) Mitsukoshimae Station on Ginza Line (6 min)
		1303	Apt.		
Address	3-6-7, Nihombashihoncho, Chuo-Ku, Tokyo				



Lease Conditions	
LAYOUT	1 BR
SIZE	43.47 m²/467.9 ft²
RENT	JPY 190,000 / month
Management Fee	JPY 15,000/month
Deposit	2 months
Key Money	-
Lease Term	Standard lease for 24 months
Available	End, Jul, 2024
Renewal Fee	1 month
Agent Fee	1 month + tax
Other Info	Guarantor Company : TBC / No Key Money / Auto lock / Air-Con / Separated Toilet / Balcony / Penalty Fee for Early Cancellation / Flooring / Bathroom dryer

Building Information			
Completion	Feb, 2005	Earthquake Resistance	New
Structure	SRC, 15 floors above		
Car Parking	-		
Bicycle Parking	-		
Music Instrument	-	Pet	N/A
Facilities	Within 20 min to Tokyo station by car / Delivery box / Elevator / Security / Close to Station / 24h Garbage Drop-off / High-rise		

\*The actual Layout & Size may differ slightly from this floor plans & pictures.



HOUSEREP TOKYO INC.

ハウスレップトーキョー株式会社

#301, 1-4-15, Hiroo, Shibuya-ku, Tokyo 150-0012, Japan

+81 (0)3 6427 5860

inquiry@housserep-tokyo.com

Transaction Type : Intermediate

Agent Fee : 1 month + tax

Website : www.housserep-tokyo.com



Remarks
Renters Insurance : Required