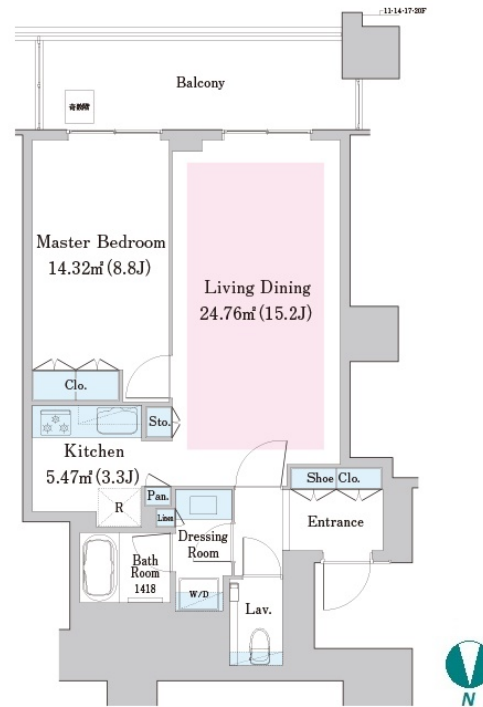
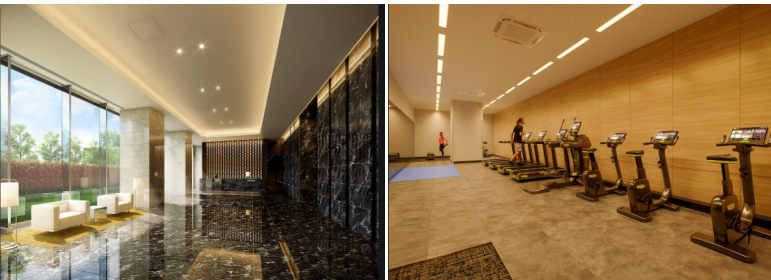


Property Name	NAKANO STATION RESIDENCE	Unit No.	TYPE	Access	Nakano Station on JR Chuo Line Rapid Service (2 min) Nakano Station on Tozai Line (2 min)
		1507	Apt.		
Address	2-24-9, Nakano, Nakano-Ku, Tokyo				



Lease Conditions		
LAYOUT	1 BR	
SIZE	61.45 m²/661.44 ft²	
RENT	JPY 379,000 / month	
Management Fee	-	
Deposit	2 months	Key Money -
Lease Term	Fixed term lease for 36 months	
Available	Now	
Renewal Fee	-	
Agent Fee	1 month + tax	
Other Info	Depreciation : 1 month / No Key Money / Internet (Extra Charge) / Penalty Fee for Early Cancellation / Floor Heating / Bathroom dryer	

Building Information			
Completion	Feb, 2024	Earthquake Resistance	New
Structure	RC, 37 floors above and 2 basement floors		
Car Parking	extra charge		
Bicycle Parking	extra charge		
Music Instrument	-	Pet	Allowed
Facilities	Motorcycle Parking (extra charge) / Concierge / Janitor / Delivery box / Elevator / Security / Close to Station / Fitness / Gym / High-rise / Newly-built (~1 y/o)		

Remarks
Renters Insurance : Required / Pet:additional deposit ( 1 month )

\*The actual Layout & Size may differ slightly from this floor plans & pictures.



HOUSEREP TOKYO INC.

ハウスレップトーキョー株式会社

#301, 1-4-15, Hiroo, Shibuya-ku, Tokyo 150-0012, Japan

+81 (0)3 6427 5860

inquiry@housserrep-tokyo.com

Transaction Type : Intermediate

Agent Fee : 1 month + tax

Website : www.housserrep-tokyo.com

