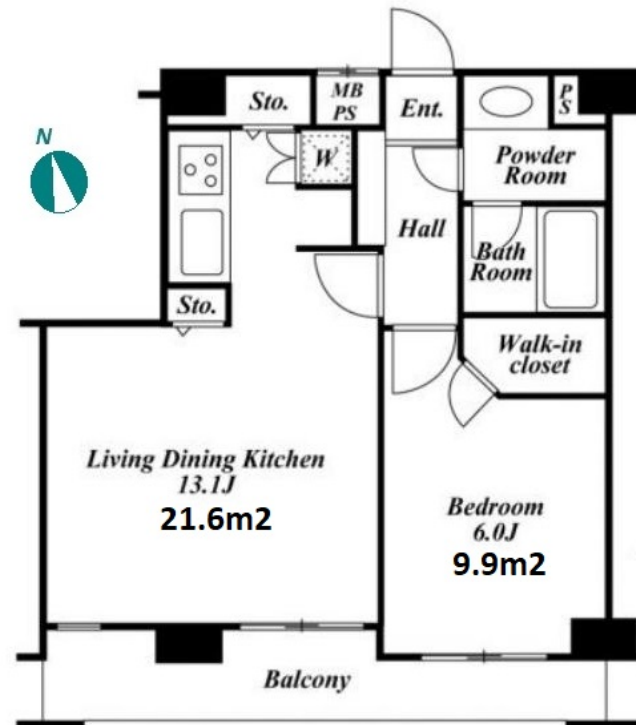


Property Name	ILSANT YOYOGI UEHARA	Unit No.	TYPE	Access
		304	Apt.	
Address	12-5, Motoyoyogicho, Shibuya-Ku, Tokyo			

Yoyogiuehara Station on Odakyu Line (3 min)
 Yoyogihachimann Station on Odakyu Line (7 min)
 Yoyogikouenn Station on Chiyoda Line (8 min)

Low rise apartment in TOKYO near Yoyogiuehara Sta.



Lease Conditions

LAYOUT	1 BR		
SIZE	44.06 m ² /474.25 ft ²		
RENT	JPY 200,000 / month		
Management Fee	JPY10,000/month		
Deposit	2 months	Key Money	1 month
Lease Term	Standard lease for 24 months		
Available	Now		
Renewal Fee	1 month		
Agent Fee	1 month + tax		
Other Info	Guarantor Company : TBC / Auto lock / Air-Con / Separated Toilet / Balcony / CS/CATV / Bathroom dryer / WIC		

Building Information

Completion	Apr, 2000	Earthquake Resistance	New
Structure	RC, 5 floors above		
Car Parking	N/A		
Bicycle Parking	-		
Music Instrument	-	Pet	-
Facilities	Delivery box / Elevator / Security / Close to Station / Low-rise		

Remarks

Renters Insurance : Required / Key replacement fee: *TBC

*The actual Layout & Size may differ slightly from this floor plans & pictures.



HOUSEREP TOKYO INC.

ハウスレップトーキョー株式会社

#301, 1-4-15, Hiroo, Shibuya-ku, Tokyo 150-0012, Japan

+81 (0)3 6427 5860

inquiry@housserrep-tokyo.com

Transaction Type : Intermediate

Agent Fee : 1 month + tax

Website : www.housserrep-tokyo.com

