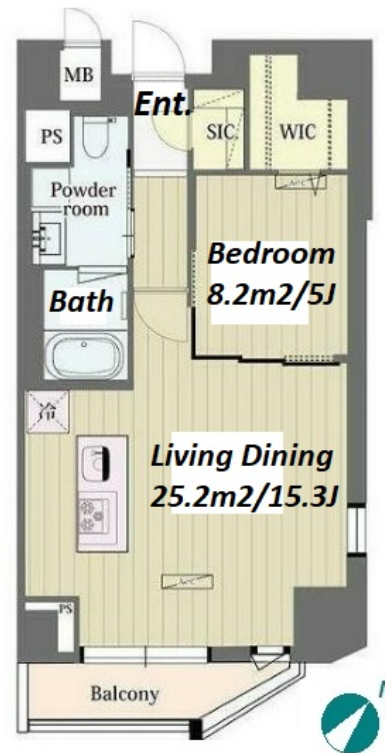


Property Name	STRAHLE KAMIYAMACHO	Unit No.	TYPE	Access	Yoyogihachimann Station on Odakyu Line (10 min) Yoyogikouenn Station on Chiyoda Line (12 min)
		501	Apt.		
Address	24-5, Kamiyamacho, Shibuya-Ku, Tokyo				

## Brand New Apartment near Yoyogi Park



### Lease Conditions

LAYOUT	1 BR		
SIZE	50.08 m²/539.05 ft²		
RENT	JPY 254,000 / month		
Management Fee	JPY 15,000/month		
Deposit	2 months	Key Money	1 month
Lease Term	Standard lease for 24 months		
Available	Now		
Renewal Fee	1 month		
Agent Fee	1 month + tax		
Other Info	Key Replacement Fee : JPY20,000 Tax not included / Guarantor Company : TBC / Auto lock / Air-Con / Separated Toilet / Balcony / Flooring / Bathroom dryer / WIC		

### Building Information

Completion	Jan, 2020	Earthquake Resistance	New
Structure	RC, 13 floors above		
Car Parking	N/A		
Bicycle Parking	for 1 space ( Included )		
Music Instrument	-	Pet	-
Facilities	Motorcycle Parking (TBC) / Within 20 min to Roppongi by train / Within 20 min to Tokyo station by car / Near Large Parks / Delivery box / Elevator		

### Remarks

Renters Insurance : Required

\*The actual Layout & Size may differ slightly from this floor plans & pictures.



**HOUSEREP TOKYO INC.**

ハウスレップトーキョー株式会社

#301, 1-4-15, Hiroo, Shibuya-ku, Tokyo 150-0012, Japan

+81 (0)3 6427 5860

inquiry@housserrep-tokyo.com

Transaction Type : Intermediate

Agent Fee : 1 month + tax

Website : www.housserrep-tokyo.com

