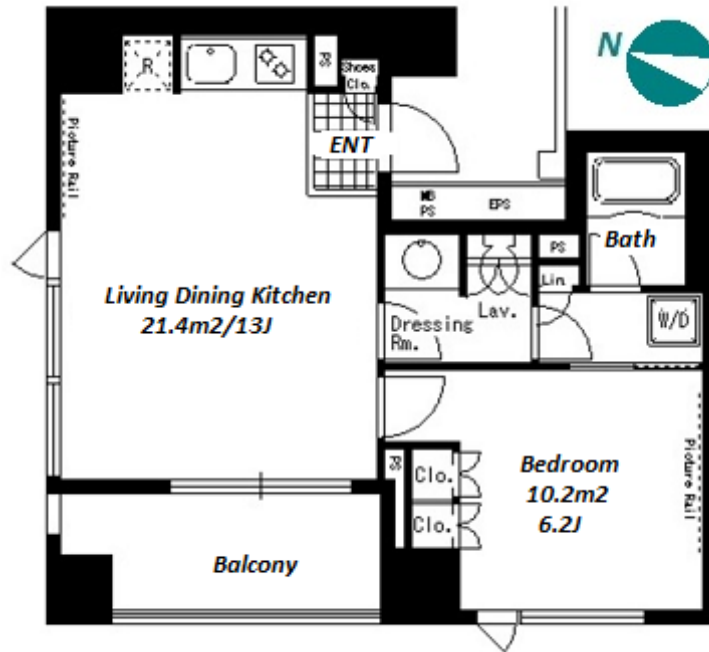


Property Name	PARK AXIS SHIBUYA JINNAN	Unit No.	TYPE	Access	Shibuya Station on Toyoko Line (8 min)
		1303	Apt.		
Address	6-20, Udagawacho, Shibuya-Ku, Tokyo				

Mid-rise Apt. in Shibuya, near Yoyogi Park



Lease Conditions	
LAYOUT	1 BR
SIZE	43.69 m ² /470.27 ft ²
RENT	JPY 253,000 / month
Management Fee	-
Deposit	2 months
Key Money	-
Lease Term	Standard lease for 24 months
Available	End, Aug, 2024
Renewal Fee	1 month
Agent Fee	1 month + tax
Other Info	Key Replacement Fee : JPY15,000 Tax not included / Guarantor Company : TBC / No Key Money / Auto lock / Air-Con / Separated Toilet / Balcony / Penalty Fee for Early Cancellation / Musical Instrument Negotiable / CS/CATV / Flooring

Building Information			
Completion	Jul, 2005	Earthquake Resistance	New
Structure	RC, 13 floors above		
Car Parking	N/A		
Bicycle Parking	extra charge		
Music Instrument	Negotiable	Pet	N/A
Facilities	Motorcycle Parking (JPY10,000 + tax / month) / Within 20 min to Roppongi by train / Near Large Parks / Janitor / Delivery box / Elevator		

*The actual Layout & Size may differ slightly from this floor plans & pictures.



HOUSEREP TOKYO INC.

ハウスレップトーキョー株式会社

#301, 1-4-15, Hiroo, Shibuya-ku, Tokyo 150-0012, Japan

+81 (0)3 6427 5860

inquiry@housserrep-tokyo.com

Transaction Type : Intermediate

Agent Fee : 1 month + tax

Website : www.housserrep-tokyo.com



Remarks
Renters Insurance : Required