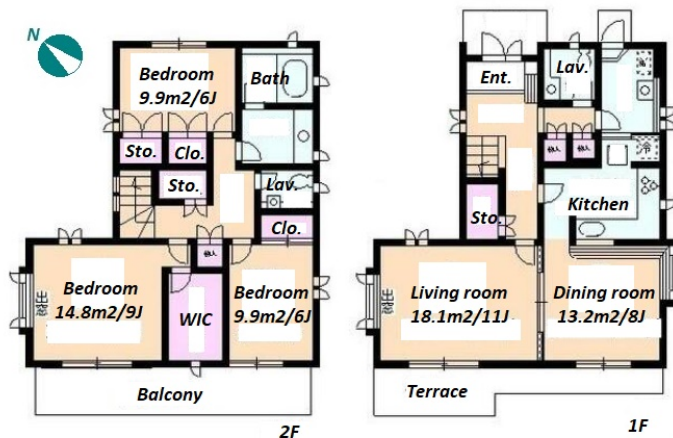
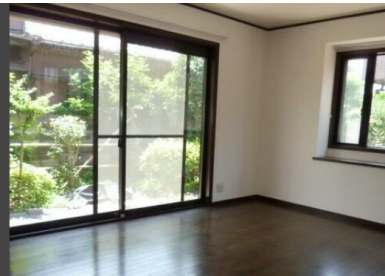


Property Name	VEL DOMIR FUKASAWA	Unit No.	TYPE	Access	Oyamadai Station on Oimachi Line (13 min) Todoroki Station on Oimachi Line (16 min)
		C	House		
Address	3-29-25, Fukasawa, Setagaya-Ku, Tokyo				



Lease Conditions

LAYOUT	3 BR		
SIZE	132.41 m ² /1425.24 ft ²		
RENT	JPY 400,000 / month		
Management Fee	-		
Deposit	2 months	Key Money	1 month
Lease Term	Standard lease for 24 months		
Available	Mid, Sep, 2024		
Renewal Fee	1 month		
Agent Fee	1 month + tax		
Other Info	Key Replacement Fee : JPY50,000 Tax not included / Guarantor Company : TBC / Air-Con / Separated Toilet / Balcony / Musical Instrument Negotiable / Garden/Terrace / Flooring / Carpet / 2 Toilets / Private Yard		

Building Information

Completion	Mar, 1991	Earthquake Resistance	New
Structure	Wooden, 2 floors above		
Car Parking	for 2 spaces (Included)		
Bicycle Parking	TBC		
Music Instrument	Negotiable	Pet	-
Facilities	Motorcycle Parking (TBC) / Near Large Parks		

Remarks

Renters Insurance : Required

*The actual Layout & Size may differ slightly from this floor plans & pictures.



HOUSEREP TOKYO INC.

ハウスレップトーキョー株式会社

#301, 1-4-15, Hiroo, Shibuya-ku, Tokyo 150-0012, Japan

+81 (0)3 6427 5860

inquiry@housserrep-tokyo.com

Transaction Type : Intermediate

Agent Fee : 1 month + tax

Website : www.housserrep-tokyo.com

