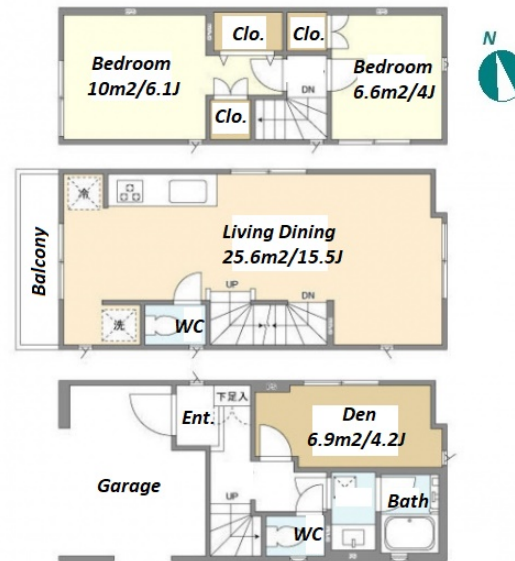
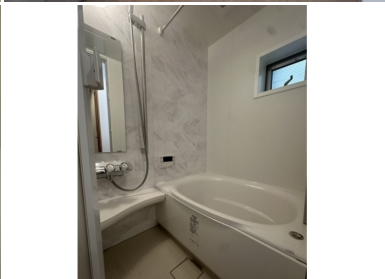


Property Name	KOLET KOMABA-TOUDAIMAE	Unit No.	TYPE	Access	Komabatoudaimae Station on Keio Inokashira Line (5 min)
		-	House		
Address	1-14-11, Komaba, Meguro-Ku, Tokyo				



Lease Conditions

LAYOUT	2 BR+Den	
SIZE	70.01 m²/753.58 ft²	
RENT	JPY 357,000 / month	
Management Fee	-	
Deposit	2 months	Key Money 1 month
Lease Term	Standard lease for 24 months	
Available	Now	
Renewal Fee	1 month	
Agent Fee	1 month + tax	
Other Info	Guarantor Company : TBC / Auto lock / Air-Con / Separated Toilet / Balcony / Internet (Extra Charge) / Flooring / Bathroom dryer / 2 Toilets	

Building Information

Completion	Jan, 2024	Earthquake Resistance	New
Structure	Wooden, 3 floors above		
Car Parking	for 1 space (Included)		
Bicycle Parking	-		
Music Instrument	-	Pet	Negotiable
Facilities	House / Delivery box / Close to Station / Newly-built (~1 y/o)		

Remarks

Renters Insurance : Required

*The actual Layout & Size may differ slightly from this floor plans & pictures.



HOUSEREP TOKYO INC.

ハウズレップトーキョー株式会社

#301, 1-4-15, Hiroo, Shibuya-ku, Tokyo 150-0012, Japan

+81 (0)3 6427 5860

inquiry@housserrep-tokyo.com

Transaction Type : Intermediate

Agent Fee : 1 month + tax

Website : www.housserrep-tokyo.com

