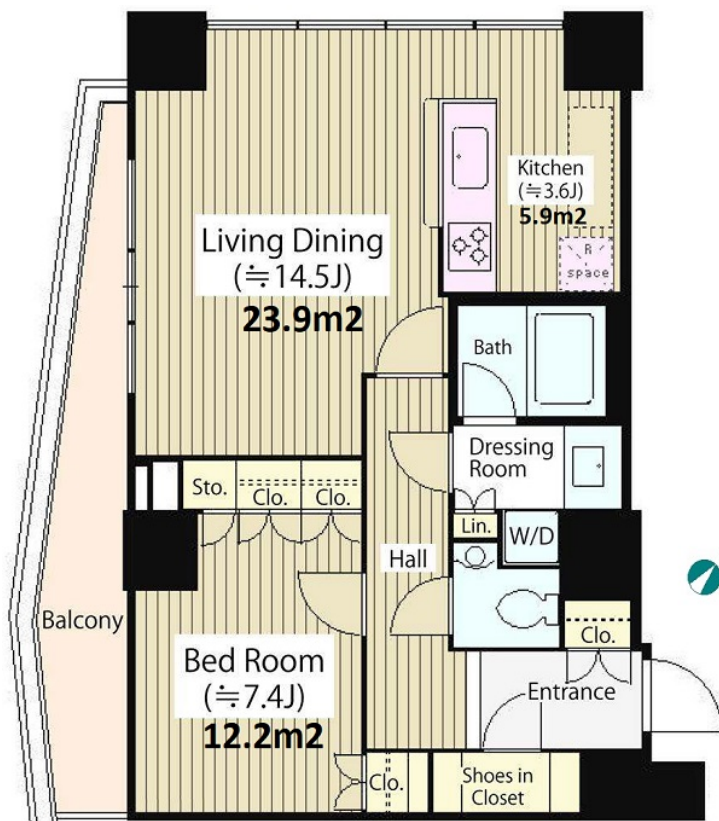


Property Name	ATLAS TOWER ROPPONGI	Unit No.	TYPE	Access	Roppongi Station on Hibiya Line (3 min) Roppongi Station on Oedo Line (3 min) Nogizaka Station on Chiyoda Line (5 min)
		601	Apt.		
Address	7-7-13, Roppongi, Minato-Ku, Tokyo				



Lease Conditions

LAYOUT	1 BR		
SIZE	65.21 m ² /701.91 ft ²		
RENT	JPY 480,000 / month		
Management Fee	JPY20,000/month		
Deposit	1 month	Key Money	1 month
Lease Term	Standard lease for 24 months		
Available	End, Aug, 2024		
Renewal Fee	1 month		
Agent Fee	1 month + tax		
Other Info	Key Replacement Fee : JPY20,000 Tax not included / Guarantor Company : TBC / Auto lock / Air-Con / Separated Toilet / Balcony / Musical Instrument Negotiable / CS/CATV / Floor Heating / Dishwasher / Bathroom dryer		

Building Information

Completion	Feb, 2010	Earthquake Resistance	New
Structure	RC, 29 floors above and 2 basement floors		
Car Parking	N/A		
Bicycle Parking	TBC		
Music Instrument	Negotiable	Pet	N/A
Facilities	Motorcycle Parking (TBC) / Within 20 min walk to Roppongi / Near Large Parks / Concierge / Delivery box / Elevator		

Remarks

Renters Insurance : Required

*The actual Layout & Size may differ slightly from this floor plans & pictures.



HOUSEREP TOKYO INC.

ハウスレップトーキョー株式会社

#301, 1-4-15, Hiroo, Shibuya-ku, Tokyo 150-0012, Japan

+81 (0)3 6427 5860

inquiry@housserrep-tokyo.com

Transaction Type : Intermediate

Agent Fee : 1 month + tax

Website : www.housserrep-tokyo.com

