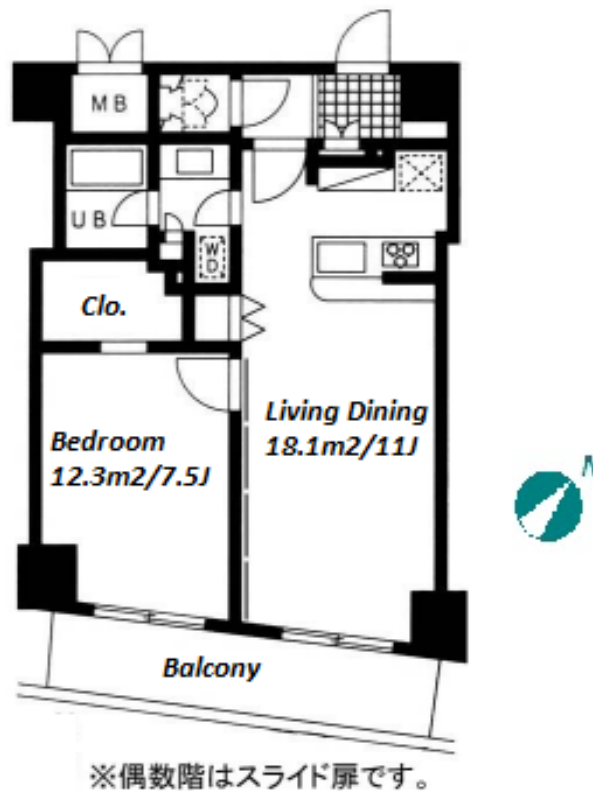


Property Name	RESIDIA NIHOMBASHI	Unit No.	TYPE	Access	Ninngyouchou Station on Hibiya Line (1 min) Ninngyouchou Station on Toei Asakusa Line (1 min)
	NINGYOCHO II	402	Apt.		
Address	3-4-15, Nihombashiningyocho, Chuo-Ku, Tokyo				

Mid-rise apt. in Ningyocho area



Lease Conditions		
LAYOUT	1 BR	
SIZE	47.41 m²/510.31 ft²	
RENT	JPY 215,000 / month	
Management Fee	JPY 15,000/month	
Deposit	2 months	Key Money 1 month
Lease Term	Standard lease for 24 months	
Available	Mid, Jul, 2024	
Renewal Fee	1 month	
Agent Fee	1 month + tax	
Other Info	Key Replacement Fee : JPY 18,000 Tax not included / Guarantor Company : TBC / No Key Money / Auto lock / Air-Con / Separated Toilet / Balcony / Internet (Extra Charge) / Penalty Fee for Early Cancellation / Flooring / IH Stoves / Bathroom dryer	

Building Information			
Completion	Jan, 2007	Earthquake Resistance	New
Structure	RC, 14 floors above		
Car Parking	N/A		
Bicycle Parking	N/A		
Music Instrument	-	Pet	N/A
Facilities	Delivery box / Elevator		

*The actual Layout & Size may differ slightly from this floor plans & pictures.



HOUSEREP TOKYO INC.

ハウズレップトーキョー株式会社

#301, 1-4-15, Hiroo, Shibuya-ku, Tokyo 150-0012, Japan

+81 (0)3 6427 5860

inquiry@housserrep-tokyo.com

Transaction Type : Intermediate

Agent Fee : 1 month + tax

Website : www.housserrep-tokyo.com



Remarks	
Internet subscription fee: 2,000yen+tax/month Tenant membership fee: 10,000yen+tax/2years / Tenant membership fee: 10,000yen+tax/2yrs. / Internet usage fee: 1,500yen+tax/month (regardless of usage).	