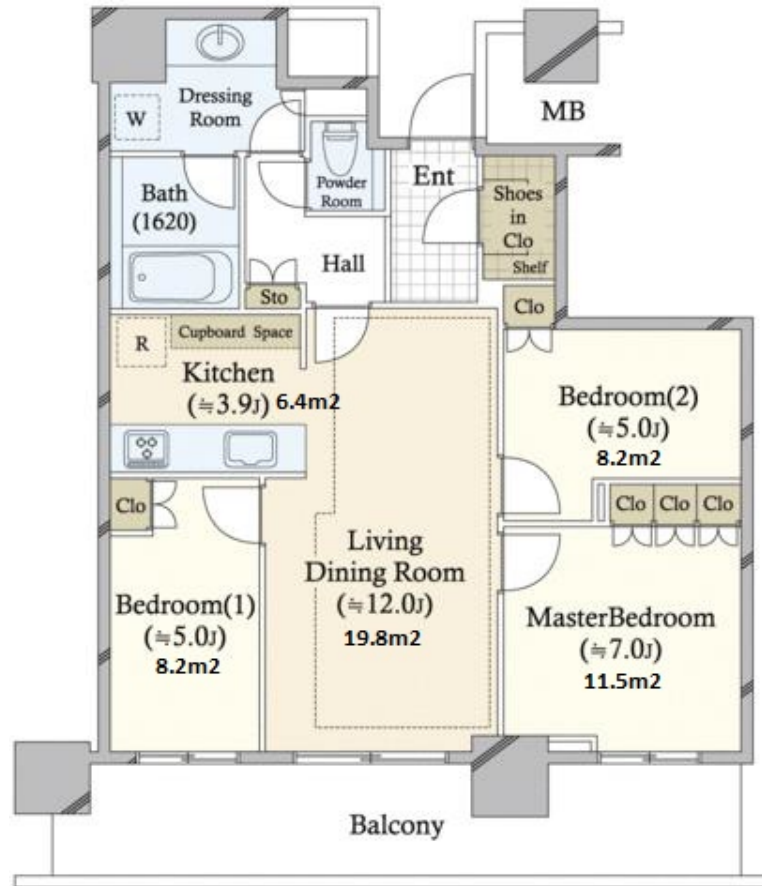


Property Name	THE TOWER YOKOHAMA KITANAKA	Unit No.	TYPE	Access	Bashamichi Station on Minatomirai Line (1 min) Sakuragichou Station on JR Negishi Line (8 min) Kannnai Station on JR Negishi Line (9 min)
		6F	Apt.		
Address	5-57-2, Kitanakadori, Naka-Ku, Yokohama-Shi, Kanagawa				

Modern luxury high-rise condo in downtown Yokohama area



Lease Conditions		
LAYOUT	3 BR	
SIZE	75.62 m ² /813.96 ft ²	
RENT	JPY 350,000 / month	
Management Fee	JPY20,000/month	
Deposit	2 months	Key Money 1 month
Lease Term	Standard lease for 24 months	
Available	Ask for Details	
Renewal Fee	1 month	
Agent Fee	1 month + tax	
Other Info	Guarantor Company : TBC / Auto lock / Air-Con / Separated Toilet / Balcony / Penalty Fee for Early Cancellation / CS/CATV / Flooring / Floor Heating / Dishwasher / Bathroom dryer	

Building Information		
Completion	Oct, 2019	Earthquake Resistance New
Structure	RC, 58 floors above and 1 basement floors	
Car Parking	TBC	
Bicycle Parking	TBC	
Music Instrument	-	Pet N/A
Facilities	Gym ((Included)) / Near Large Parks / Front desk / Concierge / Delivery box / Elevator / Sky lounge / Security / Close to Station / 24h Garbage Drop-off / Fitness / Gym / High-rise	

Remarks
Renters Insurance : Required / Key replacement fee: TBC

*The actual Layout & Size may differ slightly from this floor plans & pictures.



HOUSEREP TOKYO INC.

ハウスレップトーキョー株式会社

#301, 1-4-15, Hiroo, Shibuya-ku, Tokyo 150-0012, Japan

+81 (0)3 6427 5860

inquiry@housserrep-tokyo.com

Transaction Type : Intermediate

Agent Fee : 1 month + tax

Website : www.housserrep-tokyo.com

